

LAMPIRAN 2

Rencana Pemeriksaan dan perawatan

HYUNDAI MAN B&W		Checking and Maintenance Schedule, 26-70 MC/MC-C Engines													900-1		
No.	Procedure	H	Regular Checks			Service interval (x 1000 hours of operation)								B	P	Remarks	
			Daily	Weekly	Monthly	2	4	6	8	12	16	24	32				
909 Fuel Oil System																	
	Fuel oil water content																A, C V
-1	Fuel pump settings																A, C V
-2	VIT system																A
-3	Fuel pump cam																O
-4	Fuel pump																O
-5	Fuel pump top cover																O
-6	Fuel pump barrel assembly																R
-7	Fuel pump suction valve																C, O
-8	Fuel pump puncture valve																C
-9	Fuel pump shock absorber																O
-9	Fuel system shock absorber																O
-10	Lifting gear for roller guide																O
-11	Fuel valve																C, O
-	Fuel nozzle																R*
-12	Spindle guide																R
-13	Non-return valve																O
-14	Fuel oil high-pressure pipes																O
-15	Fuel pump roller guide		C*														C, O
-16	Fuel pump special running																O
910 Turbocharger System																	
-1	Air cooler																O
-2	Non-return valve																C, O
-3	Auxiliary blower																O
-4	Butterfly valves																O
-5	Turbocharger turbine																C, O, M
	Turbocharger air filter		C														O

* HIP compound type nozzles only. Other types: 8000 hours

* Only inspection through camshaft covers

Check up and Δt
Check at every port inspection

When referring to this page, please quote Maintenance Schedule A90050 Edition 0296

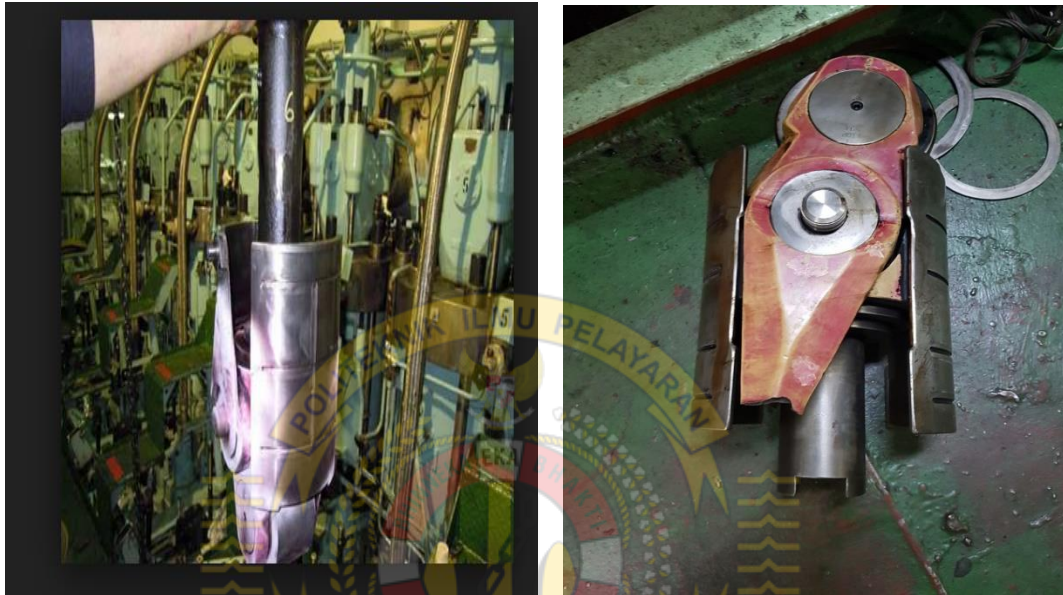
Page 5 (6)

Gambar *Interval* perawatan

Sumber : *Manual Book*

LAMPIRAN I

fuel pump roller guide



Gambar *Fuel pump roller guide*

Sumber : Data Pribadi

