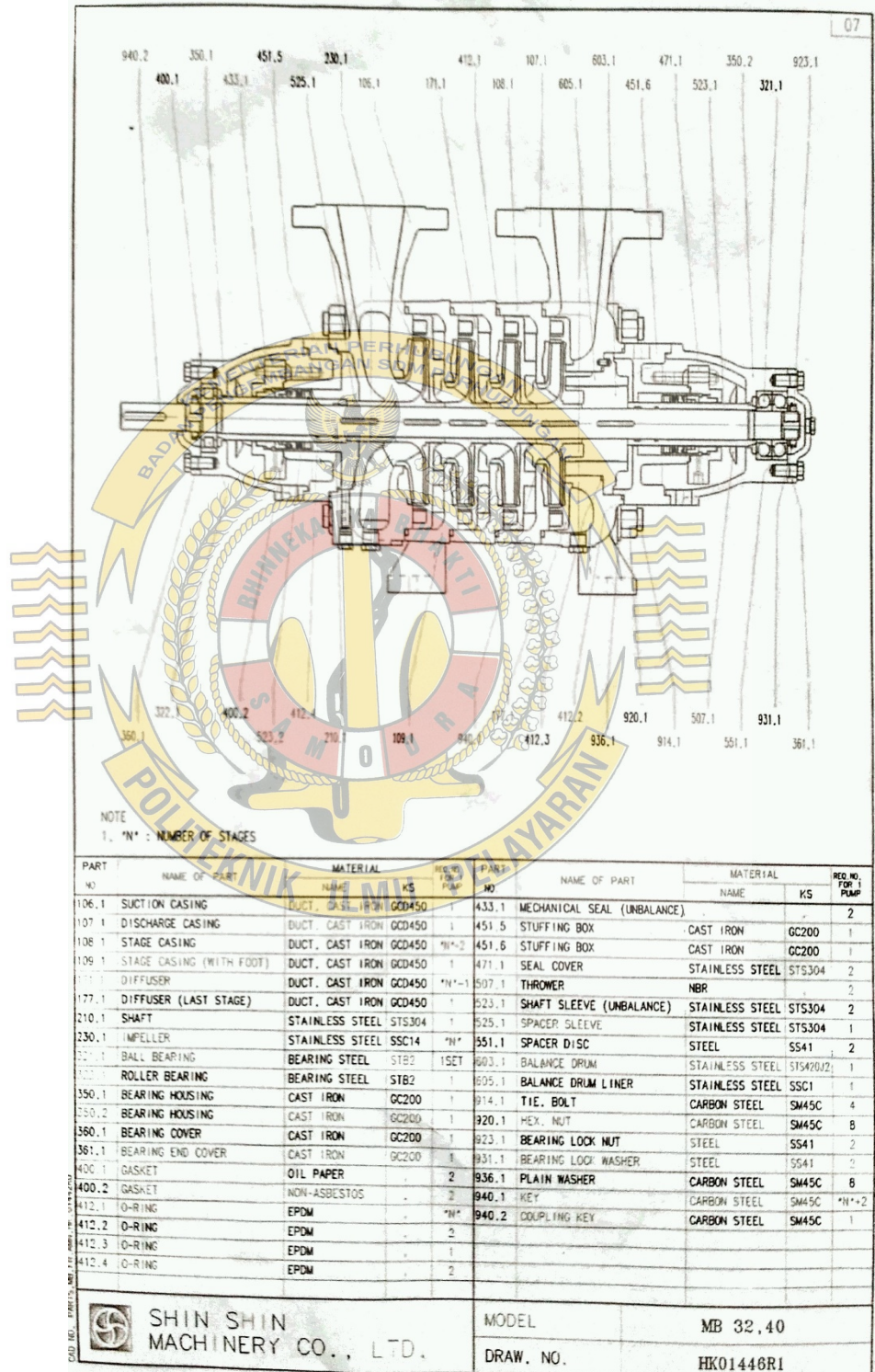


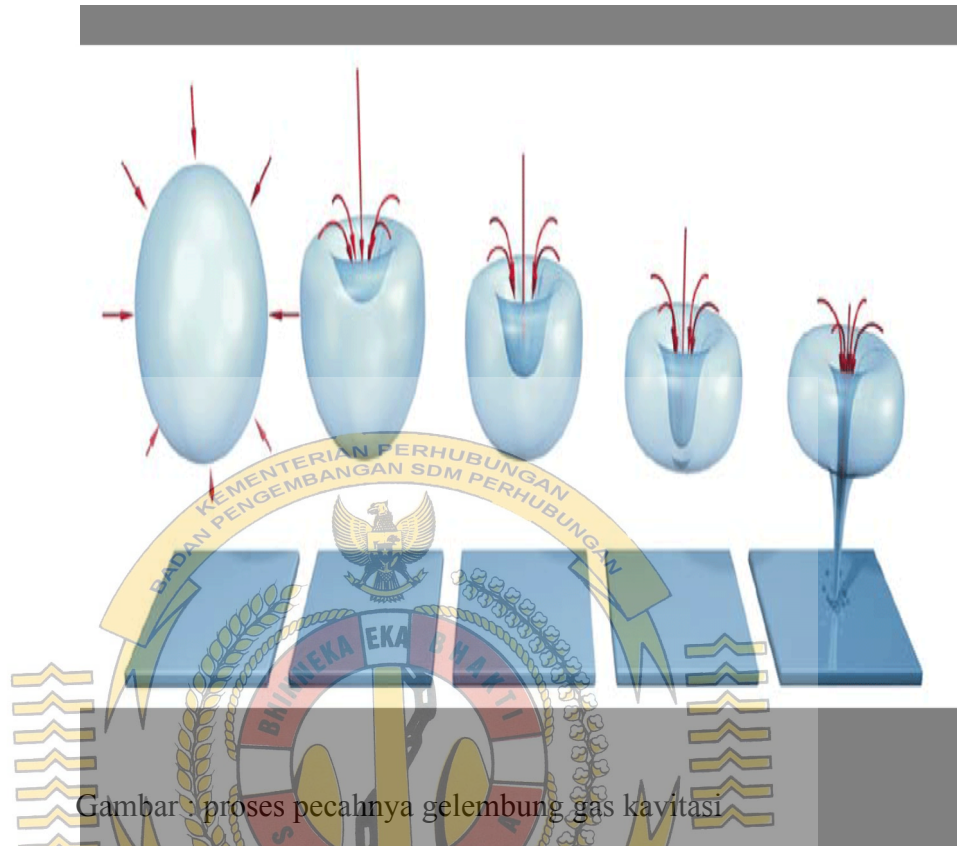
LAMPIRAN GAMBAR

Lampiran 1



Gambar: Penampang melintang boiler feed pump

Lampiran 2



Gambar : proses pecahnya gelembung gas kavitasi

Lampiran 3



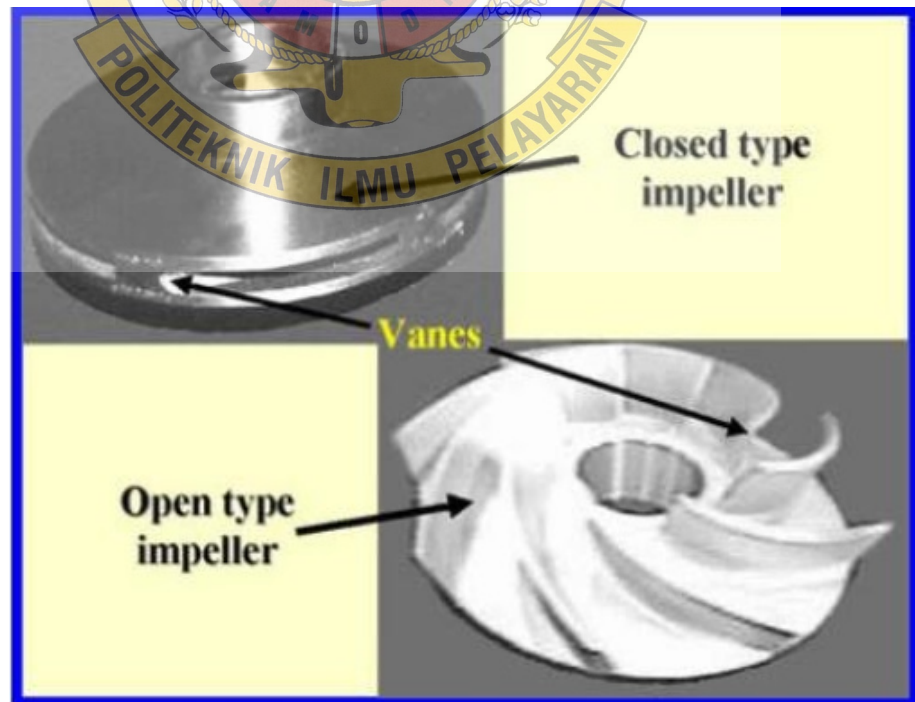
Gambar : vibration check pada boiler feed water pump

Lampiran 4



Gambar : rusaknya casing akibat kavitasi

Lampiran 5



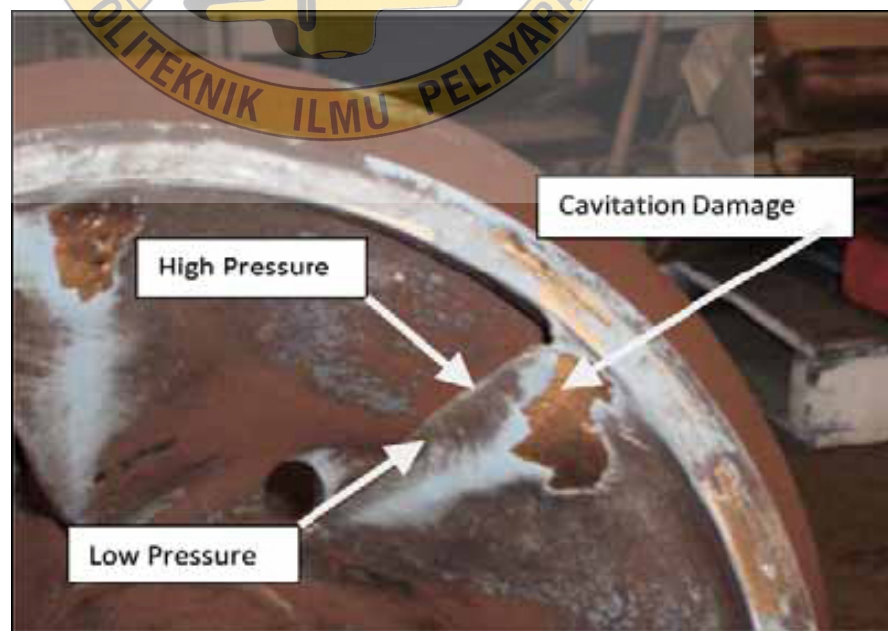
Gambar : jenis impeler

Lampiran 6



Gambar : letak terjadinya kavitasi pada impeler

Lampiran 7



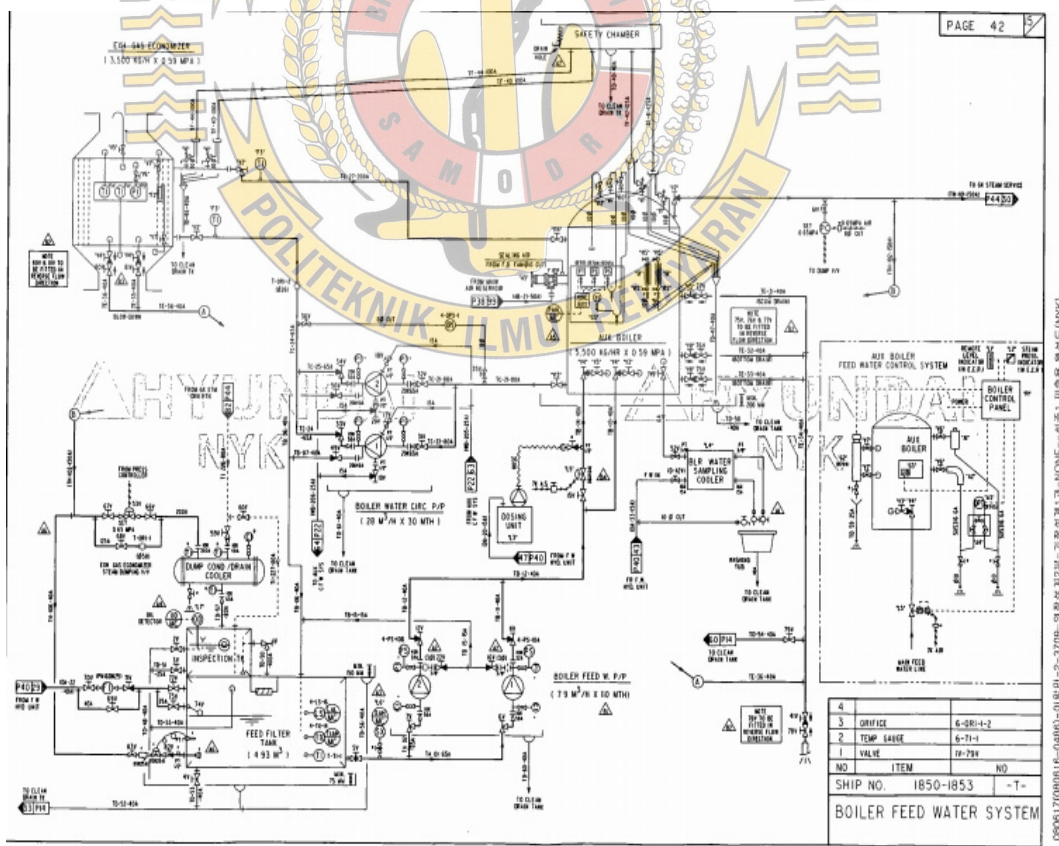
Gambar : kerusakan impeler akibat kavitasi

Lampiran 8



Gambar : kerusakan impeler boiler feed pump akibat fenomena kavitasi di MV. NYK LYRA

Lampiran 8



Gambar : Boiler feed water piping diagram