



PIP Semarang

Lampiran 1

Gambar





Gambar *Deck Crane* di MV. Armada Persada



Gambar *Deck Crane* di MV. Armada Persada

## SQP系列叶片泵-适合工业应用的更低噪音的字母叶片泵

### SQP Series Vane Pumps-Applicable to industrial applications of the cluster of lower noise vane pump

本系列是专为低噪音工况而开发的高压高性能字母叶片泵。适用于塑料机械，压铸机械，机床以及工程机械等要求噪音较低的液压系统中。其主要特点：

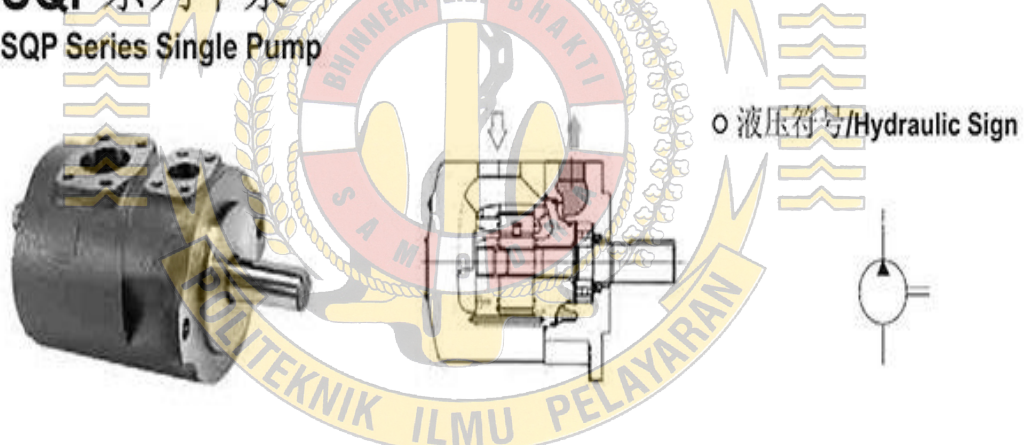
- 1、泵芯使用V系列字母叶片泵泵芯，完全互换，使用更灵活方便。
- 2、增加了脉动衰减结构的设计，极大降低了压力的脉动，使噪音更低，音质更流畅。
- 3、使用加厚的外壳设计，增加了泵的强度和抗振性，同时消音性能更优越。

This series vane pumps are high pressure and high performance intra-vane pumps, which are specially developed for low noise working condition. They are widely applied in hydraulic system for machine-tools, presses, die casting machines, engineering, plastic injection moulding and other machineries, which call for lower noise. Main characteristics

1. Cartridge its are entirely similar to those of VIC ERS stable V series pumps, which can be interchanged with cartridge its of SQP series.
2. New configuration design gets an excellent performance in restraining pulsing and noise.
3. Strengthened pump housing design offers a better anti-vibration ability, which effect the remarkable low noise.

## SQP系列单泵

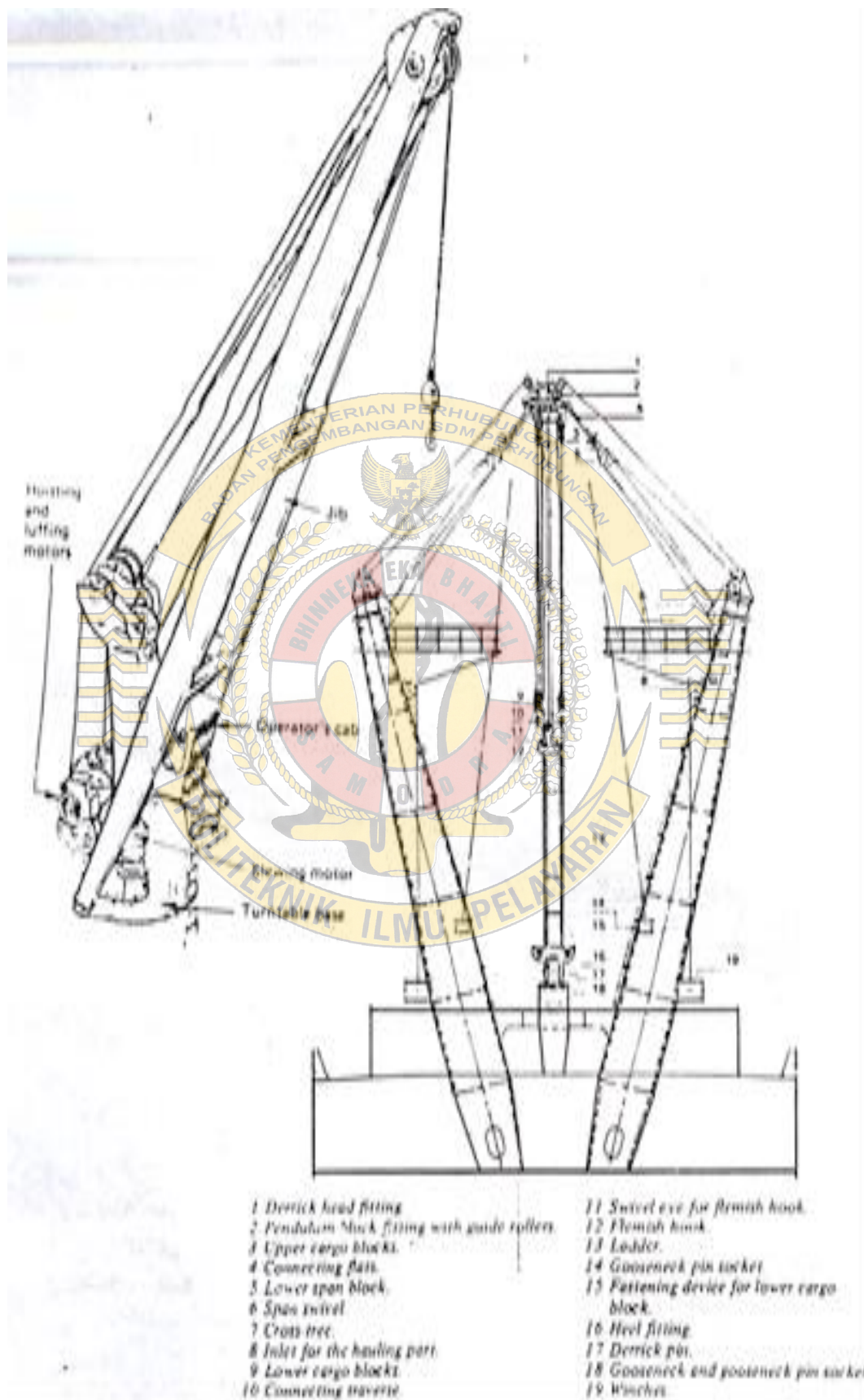
### SQP Series Single Pump



### ○ 型号说明/Model Designation

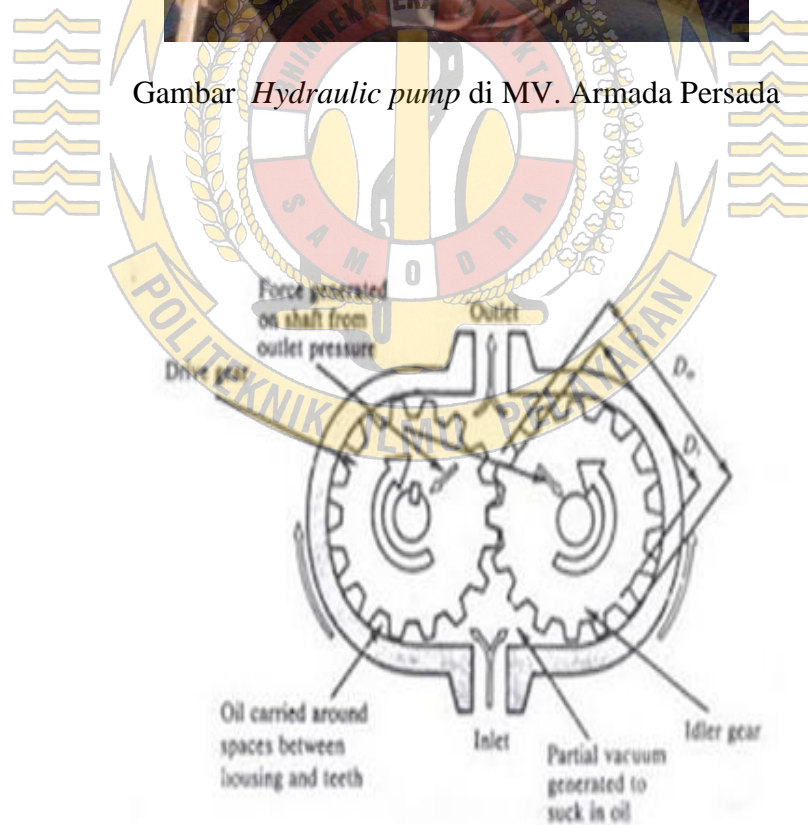
(F3-)	SQP2	-21	-86	C	-(LH)	-18
前注、油液相溶性 Infuse front, oil intermiscibility	系列号 Series	排量代号 Displacement code	轴伸形式 Shaft type	出油口位置 Outlet Positions	旋转方向 Rotation	设计号 Design number
无标记- 抗磨液压油、 水乙二醇液或 油包水乳化液 No-mark ing Anti-wear hydraulic oil, ater glycol fluid or water-oil emulsions F3- 磷酸酯液 Phosphate ester fluid	SQP1	2. 3. 4. 5. 6. 7. 8. 9. 10. 11. 12. 14	1-带键直轴 Belt ey straight shaft	(从泵的盖端看) (Viewed from cover end of pump) A-进油口对侧 outlet opposite inlet B-从进油口逆时针90 outlet 90 CC from inlet C-进油口同侧 outlet inline with inlet D-从进油口顺时针90 outlet 90 C from inlet	(从泵的轴端看) (Views form shaft end of pump) LH-逆时针旋转 Left hand for counter cloc wise 无标记-顺时针旋转 No-mar ing-Rihgt hand for cloc wise	15
	SQP2	10. 12. 14. 15. 17. 19. 21. 25				18
	SQP3	21. 25. 30. 32. 35. 38. 45	86-重型带 键直轴 Heavy belt ey straight shaft			18
	SQP4	42. 45. 50. 57. 60. 66. 75				18

在1200r/min和0.69MPa(100psi)下的额定排量USgpm. USgpm Flow (USgpm) at 1200r/min and 0.69MPa

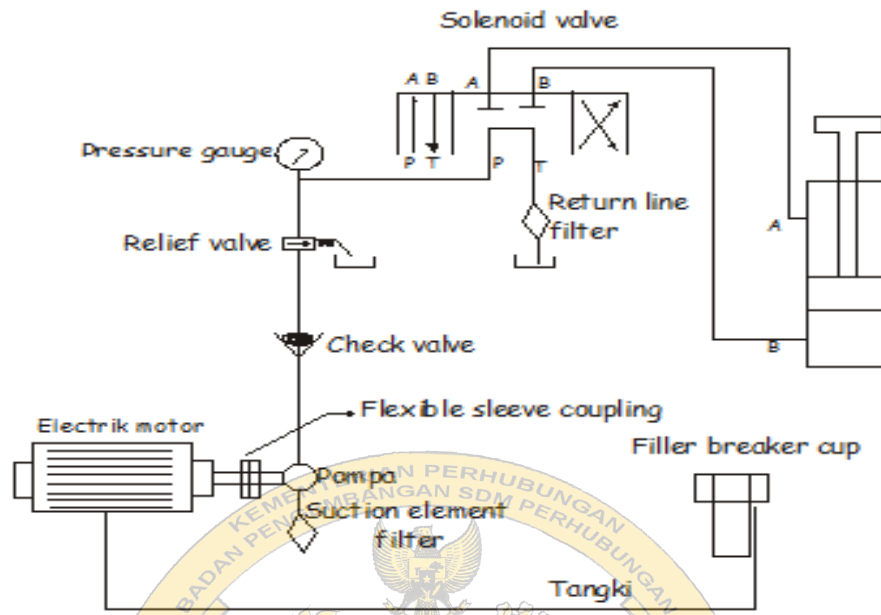




Gambar *Hydraulic pump* di MV. Armada Persada



Gambar: *Pompa roda gigi* di MV. Armada Persada



Gambar: Hydraulic Sytem  
Di MV. Armada Persada



Gambar: Air cooler