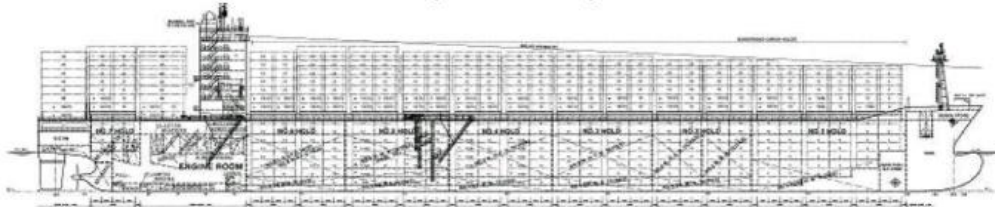


Lampiran 1

## M/V "Bernhard Schulte" (EX - CAP INES)



CALL SIGN :	VRGA3	DELIVERED TO HSD:	27TH JAN 2010
CLASS :	Lloyd's Register	BUILT : (Keel was laid)	27TH JULY 2009
LR NO :	*100A1 Container ship, IWS, LLC/MC/UMS	SHIPYARD :	DAEWOO SHIPBUILDING & MARINEENG., S.KOREA
IMO NO :	9484546	YARD NO :	4187
MMSI NO :	477639300	TYPE :	Cellular Container
LENGTH O.A. :	264.32 mt	OWNER :	PEAK HILL LIMITED, HONG KONG
LENGTH B.P.P. :	251.00 mt	FLAG/HOME PORT :	HONG KONG
BREADTH MLD. :	32.20 mt	OFFICIAL No. :	HK2567
LIGHTSHIP :	17640.1 M/T	MANAGEMENT :	Bernhard Schulte Shipmanagement (Singapore) Pvt Ltd
D.W. ON S.L.L. :	59286.7 M/T	152 Beach Rd, # 32-00 Gateway East, Singapore 189721	
DISPLACEMENT :	76926.8 M/T	DEPTH MOULDED:	21.50 m
DRAFT ON S.L.L. :	13.521 mt	DESIGNED DRAFT (MOLDED)	12.00 m
FREEBOARD MARK, SUMMER:	3858mm	KEEL TO TOPMAST :	59.60 m
F.W.ALLOWANCE :	259 mm	KEEL TO DECK :	21.50 m
TONE PER CM IMMERSION	74.16 M/T	HATCHES TYPE :	Pontoon
MAIN ENGINE :	MAN B&W 8K 90MC-05	CARGO HOLD/HATCHES No. :	07 / 14
OUTPUT :	36560KW at 104.0 Rpm	CARGO GEAR :	GEARLESS
	31080KW at 98.5 Rpm	PROVISION :	Moho Ration of the Accom - SWL 10 M/T
SERV. SPEED AT NCR :	22.5 Knots	REEFER PLUGS :	440V, 60Hz, 32A, 3 Phase, 4 Pole Plugs
CONSUMP. PER DAY :	124.9 tons		516FEU (332Dk+184H) or
DAILY PORT CONSUMP. :	Min 4 ton Max 171st for heating		615 Units (417FEU(233Dk+184H) + 198TEU Dk)
AUXILIARY ENG. :	4 sets Hyundai, 8H25/33	FUEL CAPACITY :	6321.9 m <sup>3</sup>
	2400 KW each	DIESEL CAPACITY :	244.9 m <sup>3</sup>
EMERG. GENER. :	1x 320 KVA	L.O. CAPACITY :	278 m <sup>3</sup>
PROPELLER :	5 bladed Fixed Pitch	F.W. CAPACITY :	282.4 m <sup>3</sup>
	Dia 7800mm x Pitch 7882mm	BALLAST CAPACITY :	14537.2m <sup>3</sup>
BOWTHRUSTER :	FWD, 1500kW/2040hp, CPP, Min Fr. Draft 3.5m	M.E.FUEL TYPE :	I FO 380,500,700 CST
AAIC :	CY03	BUNKERING POINT :	B. DK Fr 39-42
INMARSAT C :	telex 447702523, 447702524	P&I :	Gard P.&I. (Ber muda) Ltd.
INMARSAT F :	fax (870) 764950715/764950716	H&M U/WRI TER :	DUNCKER GmbH & Co KG PORT & STBD
FBB :	voice 870 773100929	ANCHOR SHACKLES :	13 each
	e-mail	VI SIBILTY :	Draft F/A: 13.5/13.5 446.4mt 1.86L

master@bernhard.schulte.bsmlfleet.com

CONTAINER CAPACITY - 4608 TEUS		
Compulsory 40' max loading capacity		
below deck	949 x 40'	36 x 20'
on deck	1314 x 40'	46 x 20'
total	2263 x 40'	82 x 20'
Compulsory 20' max loading capacity		
below deck	0 x 40'	1934 x 20'
on deck	0 x 40'	2674 x 20'
total	0 x 40'	4608 x 20'
45' max loading capacity		
0/DK/3rd Tier onward	697 x 45'	2 x 30(11), 2 x 30(12), 2 x 30(13)

Two High Cubes can be loaded in holds without losing any slot  
FWD Draft not less than 4.321mtrs, Slamming expected in rough seas.

Anchor 9900kg, chain dia 87mm,  
MBL 5500kN, weight 167kg/m,  
Freeboard deck 17.335

TONNAGE		
	Gross	Net
International	47,877	29,554
Suez	49,695.64	42,419.02
Panama	Max Cap. 4312TEUS/DFT 12.04mtrs even	

6 bays 1-5 & 11-15 21 tiers removed also bays 7, 9, 17-25 1 tier removed

STACK WEIGHT		
	Deck	Hold
20 foot cont.	90 ton	25 ton/Unit
40 foot cont.	120 ton/stk	34 ton/Unit

IMDG on Dk : All C classes  
IMDG U/Dk: 1 & 2 Hold: 1,2,3,4,5,1,6,1,8 & 9 IMDG U/Dk: 3,4,5 & 6 Hold: 1,4S,2,3,4,5,1,6,1,8 & 9