

SHIP'S PARTICULARS

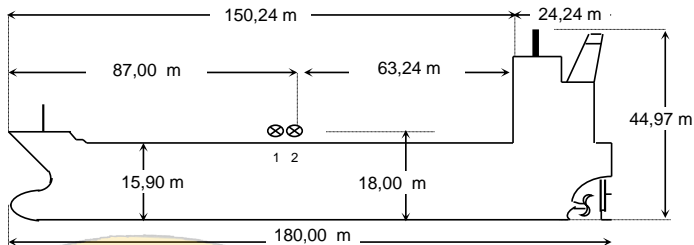
NAME	SUNGAI GERONG
CALL SIGN	POJO
FLAG	INDONESIA
PORT OF REGISTRY	JAKARTA
OFFICIAL NUMBER	GT.24167No.3874/Pst
IMO/LLOYDS NUMBER	9509906
CLASS SOCIETY	DNV + BKI
CLASS NOTATION	+1A1 Tanker for Oil ESP,CSR,ECO,BIS,SPM,LCS-DC,CLEAN,VCS-2,COAT-PSPC,(B),BMW-E(S)
P & I CLUB	NORTH OF ENGLAND

KEEL LAID	27 AUGUST 2010
LAUNCHED	06 JULY 2011
DELIVERED	26 DECEMBER 2011
SHIPYARD	ZHEJIANG CHENYE SHIPBUILDING. CO.,Ltd.China

SATELLITE COMMUNICATION		
	INM-F	INM-C
E-MAIL	Pojo@amosconnect.com	
PHONE	00870773251764	
FAX		
TELEX	N/A	452502261
MMSI	525008073	
EX. NAMES	N/A	
CS / FLAG	INDONESIA	

OWNERS	PT. PERTAMINA (PERSERO) SHIPPING DEPARTEMEN JL.YOS SUDARSO NO.32-34 TG-PRIOK, JAKARTA-14320 INDONESIA TEL.+62213815111 FAX.+622143930441
OPERATORS	PT. PERTAMINA (PERSERO) SHIPPING DEPARTEMEN JL.YOS SUDARSO NO.32-34 TG-PRIOK, JAKARTA-14320 INDONESIA TEL.+62213815111 FAX.+622143930441

PRINCIPAL DIMENSIONS	
LOA	180,00 M
LBP	173,00 M
BREADTH (Extreme)	30,50 M
DEPTH (molded)	15,90 M
HEIGHT (maximum)	44,97 M
BRIDGE FRONT - BOW	150,24 M
BRIDGE FRONT - STERN	24,24 M
BRIDGE FRONT - M'FOLD	63,24 M



TONNAGE	REGD	SUEZ
NET	7,253 T	N/A
GROSS	24,167 T	N/A
GROSS Reduced for SBT	18,722 T	N/A

TANK CAPACITIES (cbm)					
CARGO TANKS (98 %)			BLST TKS (100 %)		
GROUP I	SLOP P+S	1345.4	F.P.Tk.	1231.7	
(1 P/S + 4 P/S)			1 P/S	2993.071	
GROUP II			2 P/S	2710.309	
(2 P/S+5 P/S)			3 P/S	2608.0	
GROUP III	F.W Tanks 100%		4 P/S	2608.0	
(3 P/S + 6 P/S)	FW Tank (P)	134	5 P/S	2590.759	
	FW Tank (S)	134	6 P/S	2809.997	
			APT	653.877	
TOTAL	41218.4	TOTAL	268	TOTAL	18205.7
OTHER DETAILS					
H. Level Alarm	95%	Level gauge	RADAR REMOTE READING		
Overfill Alarm	98%				

LOAD LINE INFORMATION	FREEBOARD	DRAFT	DWT
TROPICAL	6,726 M	9,204 M	30,678.426
SUMMER	6,914 M	9,016 M	29,755.633
WINTER	7,102 M	8,828 M	28,836.316
LIGHTSHIP	13,508 M	2,422 M	9,348.57
NORMAL BALLAST COND	9,360 M	6,570 M	27,505.00
DWT WITH SBT ONLY	N/A		
FWA	199 MM		
TPC @ Summer draft	49,6 T/CM		

MACHINERY / PROPELLER / RUDDER	
MAIN ENGINE	HYUNDAI-MAN B & W 6S42MC7
M.C.R.	6480 KW@136 RPM
N.C.R.	5832 KW@131.3 RPM
MAX CRITICAL RANGE	50-65 RPM
AUX. BOILER (1 sets)	Thermal Oil Heater
GENERATOR (3 sets)	3x 6DK-26 ELECTRICAL GEN
EMER D.G. (1)	1 X CUMMIN 6CTA8 3-D (M)
PROPELLER	NAI RIGHT HANDED,4BLADE,PITCH
RUDDER	TYPE HERIANA
STEERING GEAR	2x Elektro hidrolik Rotary Vane
FW GENERATOR CAP	2 X 20 CUM/DAY

BUNKER TANKS	
FOT 1.(P/S)	390.38
FOT 2.P	188.97
FOT 2 (S)	309.676
FO (SRV)	31.08
FO SETT	31.637
TOTAL	951.743
DOT 1.(P/S)	38.92
DOT 2.(S)	182.292
DO Set	17.399
DO Srv	23.199
TOTAL	261.81

WINCHES / WINDLASS / ROPES / EMERGENCY TOWING			
	FWD	AFT	PARTICULARS
WINCHES	2	2	Hydraulic winch 12 T 1st Layer Pull
MRG WIRES	N/A	N/A	
Winch BHC	50 T	50 T	Hydraulic winch 12 T 1st Layer Pull
WINDLASS	2	N/A	Hall type,stockless 7,8 T
FIRE WIRE	1	1	25 mm x 2 x 80 mtr
ANCHOR	2	N/A	Stockless anch Port 11 sckls Stbd 12 Sckls
EMG. TOWING	1	N/A	FAIR LEAD& STRONG POINT 200 TONS
	N/A	1	FAIR LEAD &CHAIN STOPPER 200 TONS

CARGO AND BALLAST PUMPING SYSTEM				
MAIN PUMPS	NO.	CAPACITY	HEAD	RPM
CARGO OIL P/P's	3	1300 cbm/hr	125 m	1791
CARGO EDUCTOR	1	200 cbm/hr	5 mwc	1800
STRIPING PUMP	1	150 cbm/hr	125 m	1775
BALLAST PUMP	2	650 cbm/hr	25 m	1188
TK CLEANING P	1	180 cbm/hr	145 m	1780

LIFE BOATS	
2 x 30 prsn	
6,57 X 2,36 X 1.200	
Totally enclosed life boat	
LIFE RAFTS	
4 x 20 prsn, 1 x 6 prsn	
PROV. CRANE (2nos)	
1 set x 3,5 ton-6,92 M	
1 set x 0,9 ton-7,15 M	
10 min/m	

MANIFOLD ARRANGEMENT (400 mm / Steel)	
Distance of cargo manifold to cargo manifold	2000 mm
Distance of cargo manifold to vpr. return manifold	2000 mm
Distance of manifolds to ship's rail	4425 mm
Distance of spill tray grating to centre of manifold	900 mm
Distance of main deck to centre of manifold	2100 mm
Distance of main deck to top of rail	1363 mm
Distance of top of rail to centre of manifold	737 mm
Distance of manifold to ship side	4600 mm
Distance of manifold from keel	18,00 M

CARGO HOSE CRANES	
1 set x 10 ton x 10m/min at full load	

IG / VAPOR EMISSION / VENTING	
IG BLOWER CAPACITY (3 nos)	2x5000 cum/hr
P/V VALVE PR./ VAC. SETTING	-350 mm/wg
P/V BREAKER PR./VAC. SETTING	1400 mm/wg

Min Bow Drift: 1.80 m
Blst Drft: 5,00 m, 7,00 m
MARPOL Trim: 3,00 m
Propeller Immer.:4.67m

FIRE FIGHTING SYSTEM	
E/RM	CO 2,FOAM &WATER MIST
PUMP ROOM	CO2 & FOAM
CARGO/DK AREA	FOAM AND WATER

Master

Capt. Suheri
NP.746501