

ITEM	RANGE	SETTING
M1/M2	0 - 16 Kg/cm ²	7-12 Kg/cm ²
M3	0 - 8 Kg/cm ²	2-3 Kg/cm ²
M4	-0.76 - 3 Kg/cm ²	2 Kg/cm ²
15S8	5 - 50 mBar	18 mBar
15S7	0.4 - 3 mBar	0.5 mBar
15S13	0 - 8 Kg/cm ²	1.0 Kg/cm ²
16S3	-	100 °C
COMP. AIR	-	5-8 Kg/cm ²

PART ARE SUPPLIED BY HMMCO
 D.O LINE : —————
 W.O LINE : - - - - -
 AIR LINE : - · - · - ·
 STEAM LINE : - - - - -

NO.	DESCRIPTION	Q'TY	SPECIFICATION
35	W.O. OUTLET TO SLUDGE PUMP SUCTION	1	JIS 10K-50A
29	W.O. DRAIN HOPPER	1	JIS 5K-40A
19	W.O. TK OVER FLOW WITH LIGHT	1	JIS 5K-50A
18	W.O. TK DRAIN	1	JIS 5K-25A
17	W.O. TK AIR VENT	1	JIS 5K-65A
16	FROM SLUDGE PUMP	1	JIS 5K-40A
8	STEAM OUTLET	1	JIS 10K-15A
7	STEAM INLET	1	JIS 10K-15A
E,14	W.O. OUTLET FM INCINERATOR	1	JIS 5K-25A(32A)
D,15	W.O. INLET TO INCINERATOR	1	JIS 5K-25A(32A)
C,30	D.O. INLET FM D.O. TRANS. PUMP	1	JIS 5K-15A
B,31	D.O. OUTLET TO STORAGE TK	1	JIS 5K-15A
A	COMP. AIR FOR INCINERATOR	1	JIS 16K-15A

* THIS MARK IS SHIPYARD SUPPLY AND INSTALLATION ITEM

LIST OF INCINERATOR UNIT

SYMBOL	DESCRIPTION	SYMBOL	DESCRIPTION	SYMBOL	DESCRIPTION	SYMBOL	DESCRIPTION
IL	FEEDING DOOR	18Y4	SOLENOID VALVE FOR ST1	RV2	PRESSURE CONTROL FOR ST2	ST1	PRIMARY BURNER (PU1,RV1,MV1.1,MV1.2)
IC	INSIDE DOOR FOR SLUICE	18Y5	SOLENOID VALVE FOR ST1	RV1	PRESSURE CONTROL FOR ST1	RV3	PRESSURE VALVE FOR PU3
21B13	FLAME DETECTOR FOR SECONDARY COMBUSTION CHAMBER	16S3	MICRO SWITCH FOR INSIDE DOOR	RD	REGULATION DAMPER FOR EXHAUST	TCV3	3-WAY TEST COCK V/V
21B9	FLAME DETECTOR FOR PRIMARY COMBUSTION CHAMBER	18Y10	SOLENOID VALVE FOR B	7M2	W.O. DRESSING PUMP	RV4	PRESSURE VALVE FOR ST-1, ST-2
F	PRIMARY COMBUSTION CHAMBER	18Y11	SOLENOID VALVE FOR B	8M4	D.O. PUMP FOR ST2	SCV	SPEED CONTROL VALVE
EJ	EXPANSION JOINT	18Y13	W.O. VALVE	8M2	D.O. PUMP FOR ST1	VH	PRIMARY BLOWER
EF	SECONDARY COMBUSTION CHAMBER	18Y14	W.O. VALVE	15S7	PRESSURE SWITCH FOR COMBUSTION CHAMBER	TC3	TEMP. SENSOR FOR SECONDARY CHAMBER
16S4	CONTROL BOX FOR SLUICE	OL	AIR STRAINER	15S8	PRESSURE SWITCH FOR COMBUSTION AIR	TC2	TEMP. SENSOR FOR EXH. GAS
CP1	CONTROL PANEL	O	W.O. STRAINER	15S13	PRESSURE SWITCH FOR ATOMIZING AIR	TC1	TEMP. SENSOR FOR PRIMARY CHAMBER
C4	PNEUMATIC CYLINDER of SLUICE	TR	PRESSURE REGULATOR	19Y4	SOLENOID VALVE FOR C3/C4	N1	NOZZLE (TO B)
C3	PNEUMATIC CYLINDER of SLUICE	NV1	NON RETURN V/V FOR ST1	POV1	PNEUMATIC AIR VALVE	TA	TEST ADAPTOR
CK	MIXING CHAMBER	NRV2.1	NON RETURN V/V (TO B)	POV2	PNEUMATIC AIR VALVE		
B	W.O. BURNER	M4	PRESS. GAUGE FOR PU-3	18Y9	SOLENOID VALVE FOR 15S13		
IL1	ASH DOOR	M3	PRESS. GAUGE FOR TR	EDV1	ELECTRIC DOOR BLOCKING for FEEDING DOOR		
19Y11	SOLENOID VALVE FOR ST2	M2	PRESS. GAUGE FOR ST2	EDV2	ELECTRIC DOOR BLOCKING for ASH DOOR		
19Y12	SOLENOID VALVE FOR ST2	M1	PRESS. GAUGE FOR ST1	ST2	SECONDARY BURNER (PU2,RV2,MV2.1,MV2.2)		
SYMBOL	DESCRIPTION	SYMBOL	DESCRIPTION	SYMBOL	DESCRIPTION	SYMBOL	DESCRIPTION

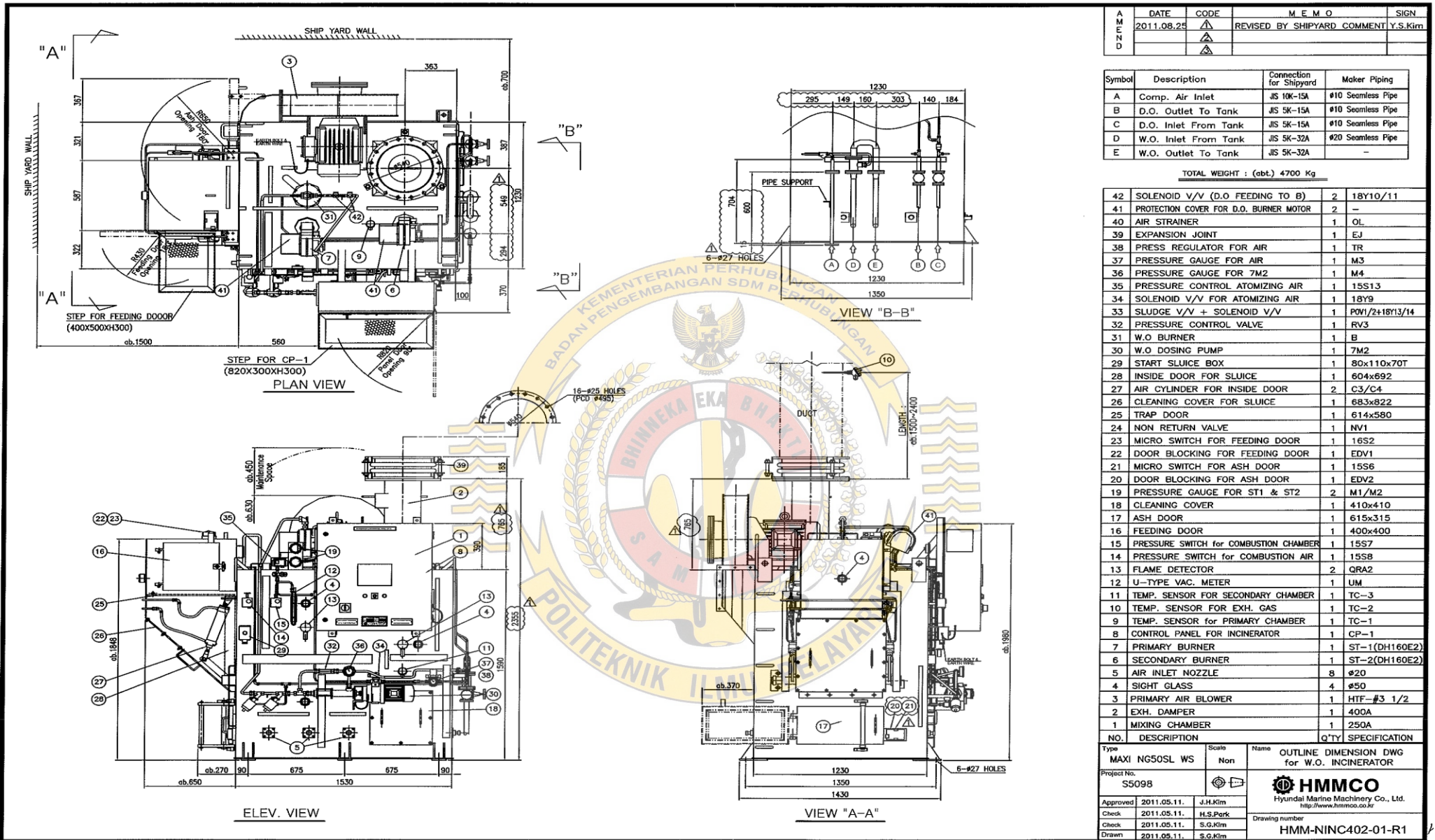
LIST OF TANK UNIT

SYMBOL	DESCRIPTION	SYMBOL	DESCRIPTION	SYMBOL	DESCRIPTION
HTS	HIGH TEMP. SWITCH	TI	THERMO METER	SH	SELF CLOSING SOUNDING PIPE
LLS	LOW LEVEL SWITCH	ICV	THERMO CONTROL VALVE	PI	PRESSURE GAUGE
HLS	HIGH LEVEL SWITCH	OCV	QUICK CLOSING VALVE	SMT	STEAM TRAP
PUS	MILL PUMP	CLG	CONTENT LEVEL GAUGE	ST	STEAM STRAINER
		LTS	LOW TEMP. SWITCH	SCDV	SELF CLOSING DRAIN VALVE

Type	MAXI NG50SL WS	Scale	Non	Name	PIPING DIAGRAM
Project No.	S5098			HMMCO Hyundai Marine Machinery Co., Ltd. http://www.hmmco.co.kr	
Approved	2011.12.13.				
Check	2011.12.13.	H.S.Park	Drawing number HIE - P04020020 - R1		
Check	2011.12.13.	S.G.Kim			
Drawn	2011.12.13.	S.G.Kim			

Gambar 3.1 bagian-bagian dari incinerator

Sumber data : instruction manual book

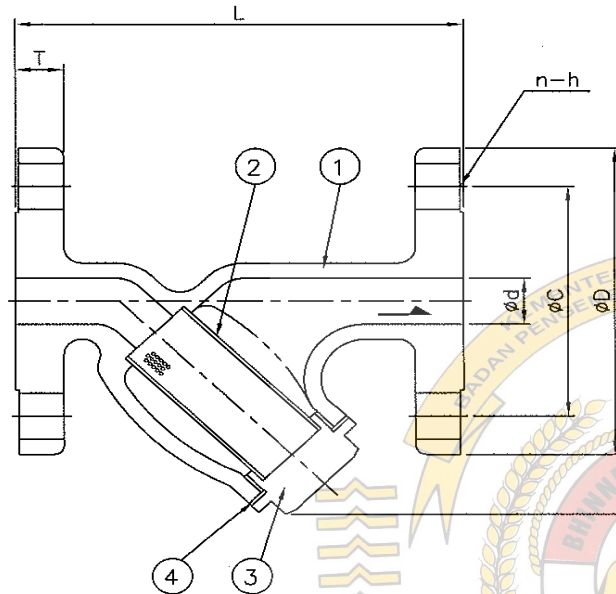


Gambar 3.1 Bagian-bagian dari incinerator

Sumber data : instruction manual book

MODEL KYS-YT

A M E N D	DATE	CODE	M E M O	SIGN
	2011.07.25.	①	REVISED BY SHIPYARD COMMENTS	S.G.Kim
		②		
		③		



DIMENSION TABLE UNIT : mm

Rating	SIZE	FLANGE - JIS B 2210					L	H
		d	C	D	T	n-h		
5 K	15A	15	60	80	9	4-12	120	90
10K, 16K		15	70	95	12	4-15	126	
20 K		15	70	95	14	4-15	130	
5 K	20A	20	65	85	10	4-12	122	90
10K, 16K		20	75	100	14	4-15	130	
20 K		20	75	100	16	4-15	134	
5 K	25A	25	75	95	10	4-12	142	105
10K, 16K		25	90	125	14	4-19	150	
20 K		25	90	125	16	4-19	154	
5 K	32A	32	90	115	12	4-15	157	105
10K, 16K		32	100	135	16	4-19	165	
20 K		32	100	135	18	4-19	169	

■ SPECIFICATION

- APPLICABLE FLUID : STEAM, HOT WATER
- HYDRO. TEST PRESSURE : WORKING PRESSURE x 1.5

4	GASKET	NON ASBESTOS	1	
3	CAP	FCD400	1	
2	SCREEN	SUS 304	1	
1	BODY	SC480	1	
NO.	DESCRIPTION	MATERIAL	Q'TY	REMARK
Type "Y" TYPE		Scale Non	Name Y-TYPE STRAINER	
Project No. S5098			HMMCO Hyundai Marine Machinery Co., Ltd. http://www.hmmco.co.kr	
Approved	2011.05.11.	J.H.Kim	Drawing number HYSYT-J01-R1	
Check	2011.05.11.	H.S.Park		
Check	2011.05.11.	S.G.Kim		
Drawn	2011.05.11.	S.G.Kim		

Gambar 4.12 Filter strainer

Sumber data : instruction manual book