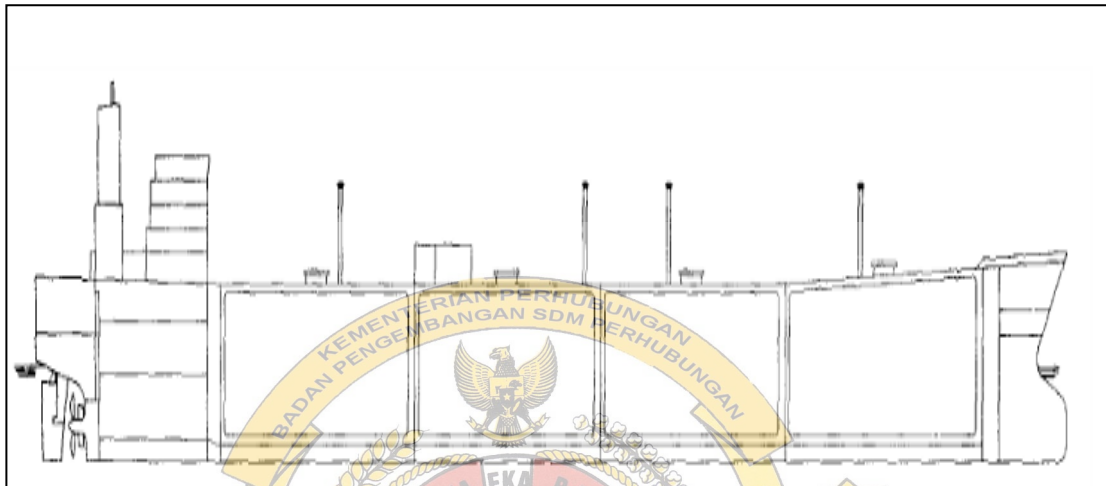
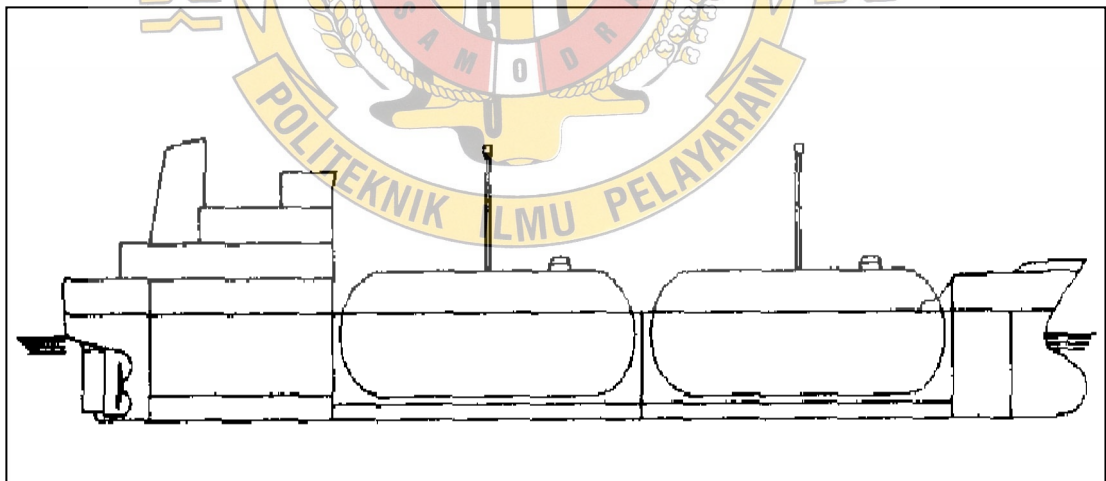


LAMPIRAN 4

GAMBAR KAPAL LIQUEFIED PETROLEUM GAS



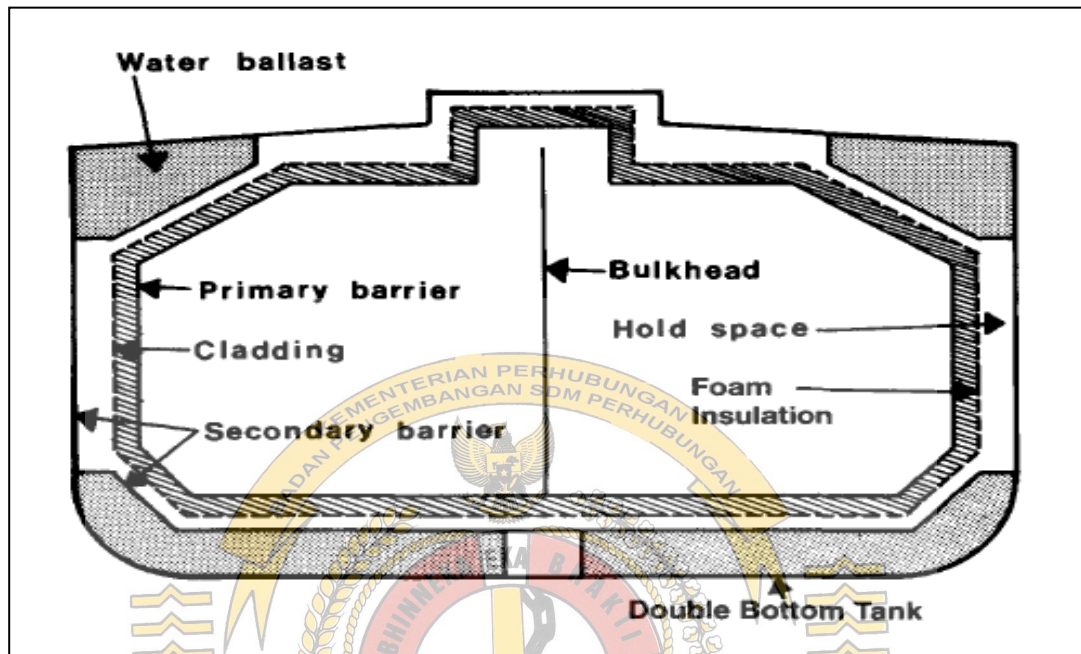
Gambar 4.1 *Fully refrigerated ship*



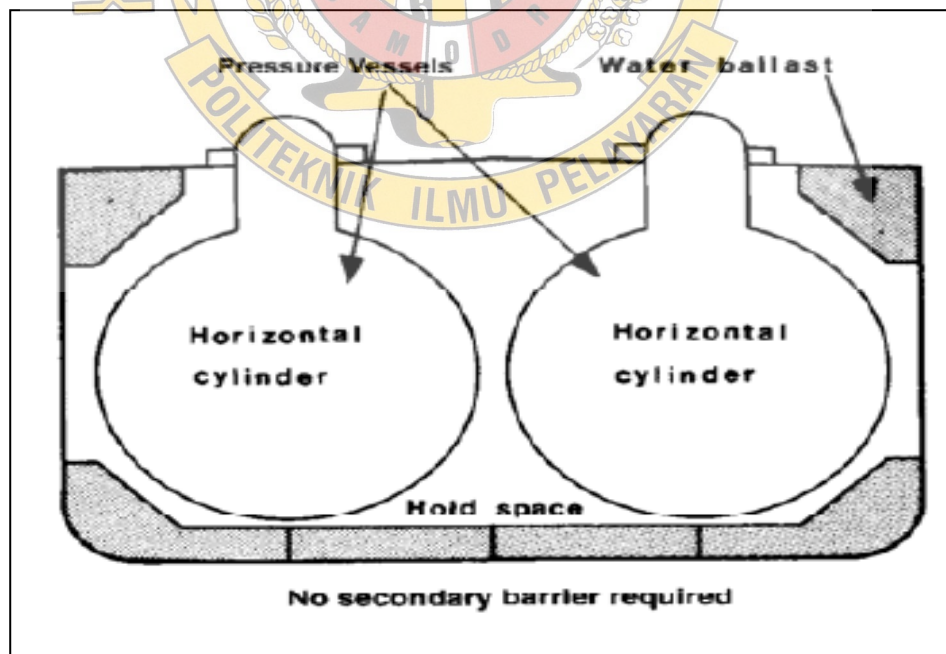
Gambar 4.2 *Fully Pressurised Ship*

LAMPIRAN 5

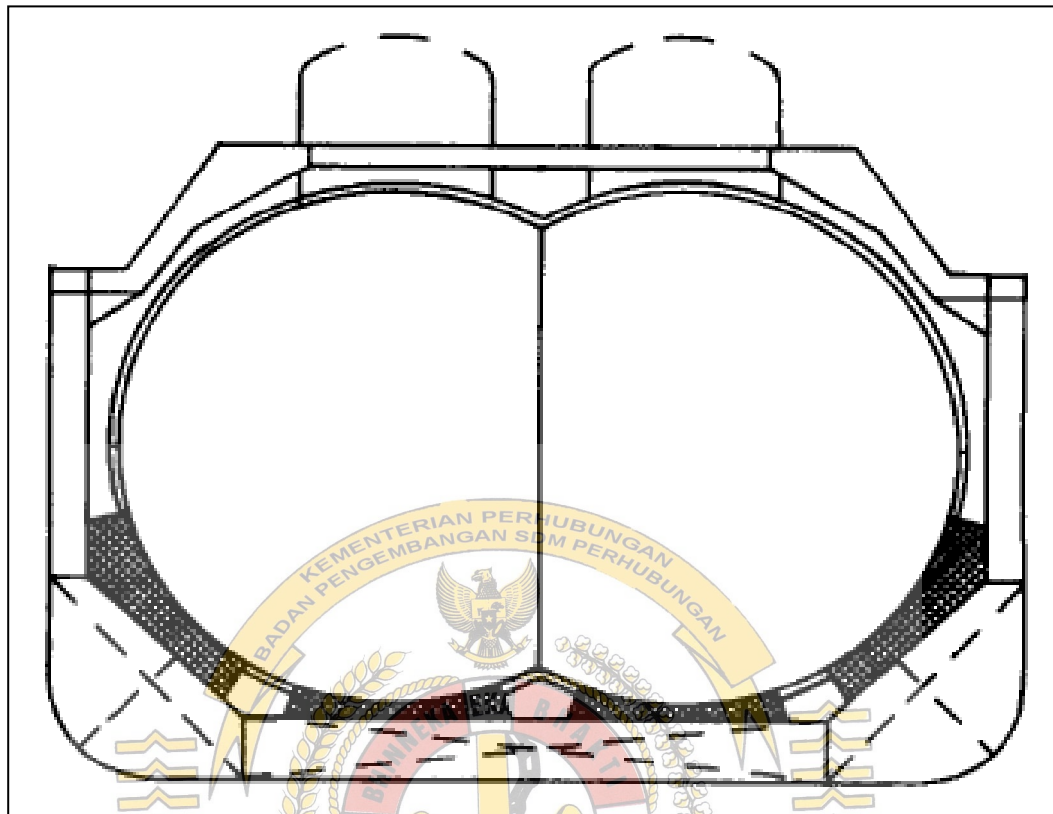
GAMBAR TIPE TANGKI MUATAN KAPAL LPG



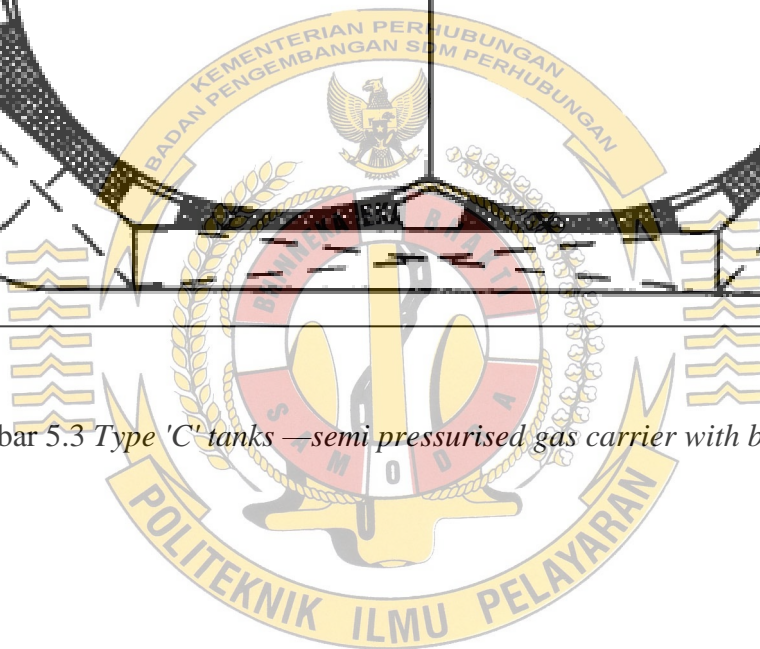
Gambar 5.1 *Prismatic Self-supporting Type 'A' tank — fully refrigerated LPG*



Gambar 5.2 *Type 'C' tanks — fully pressurised gas carrier*



Gambar 5.3 *Type 'C' tanks —semi pressurised gas carrier with bi-lobe tanks*



LAMPIRAN 6

GAMBAR SHIP TO SHIP TRANSFER



Gambar 6.1 STS dengan kapal Gas Patra



Gambar 6.2 STS dengan kapal Amelia 2



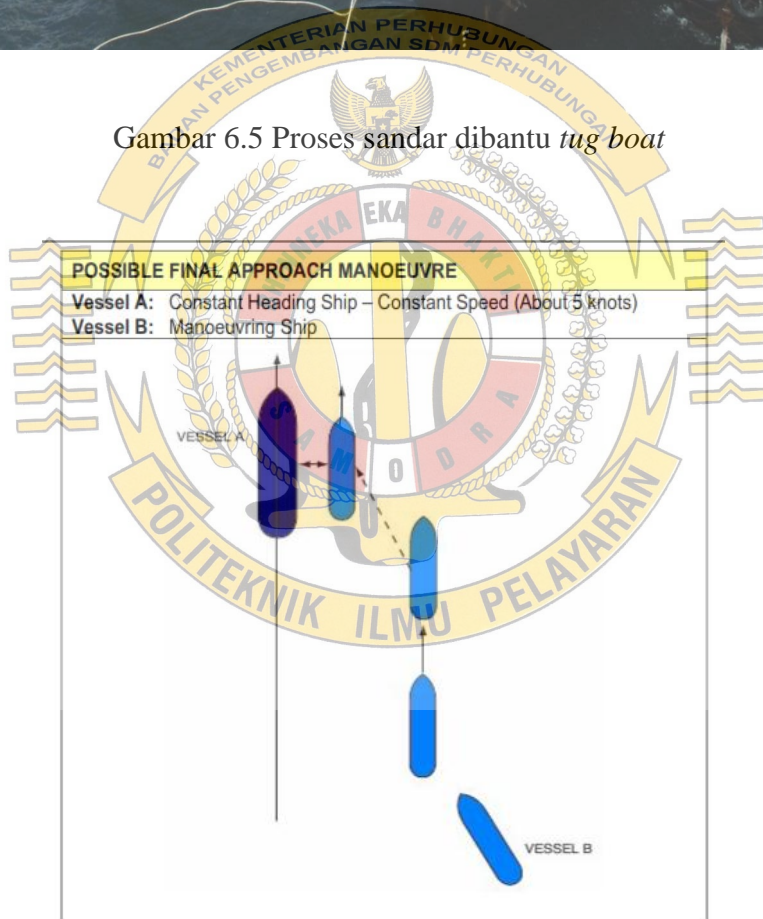
Gambar 6.3 STS dengan kapal Nuri Arizona



Gambar 6.4 STS dengan kapal Patra 2



Gambar 6.5 Proses sandar dibantu *tug boat*



Gambar 6.5 Alur penyandarran

LAMPIRAN 7

PEMASANGAN *CARGO HOSE*



Gambar 7.1 Pemasangan *cargo hose*



Gambar 7.2 Pengecekan kebocoran *cargo hose*

LAMPIRAN 8
ALAT BONGKAR MUAT



Gambar 8.1 *Cargo heater*



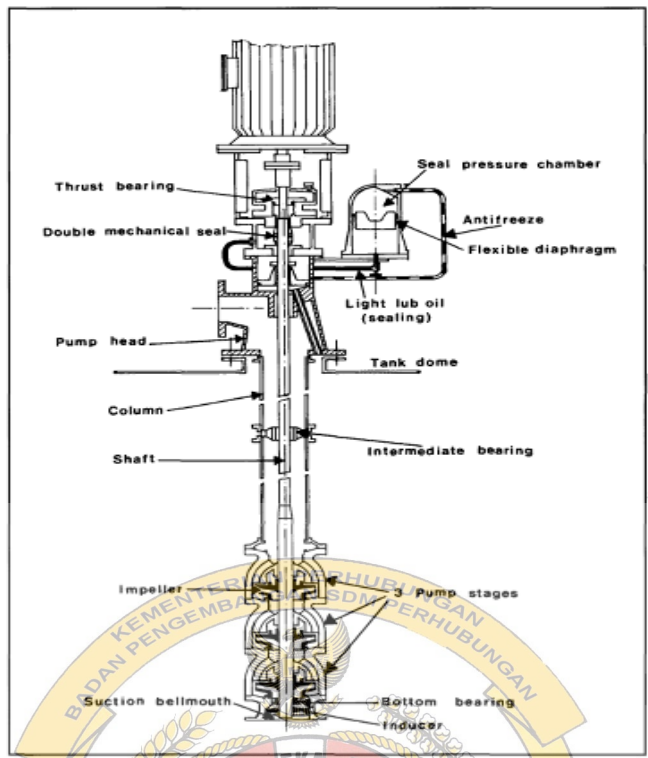
Gambar 8.2 *Booster pump*



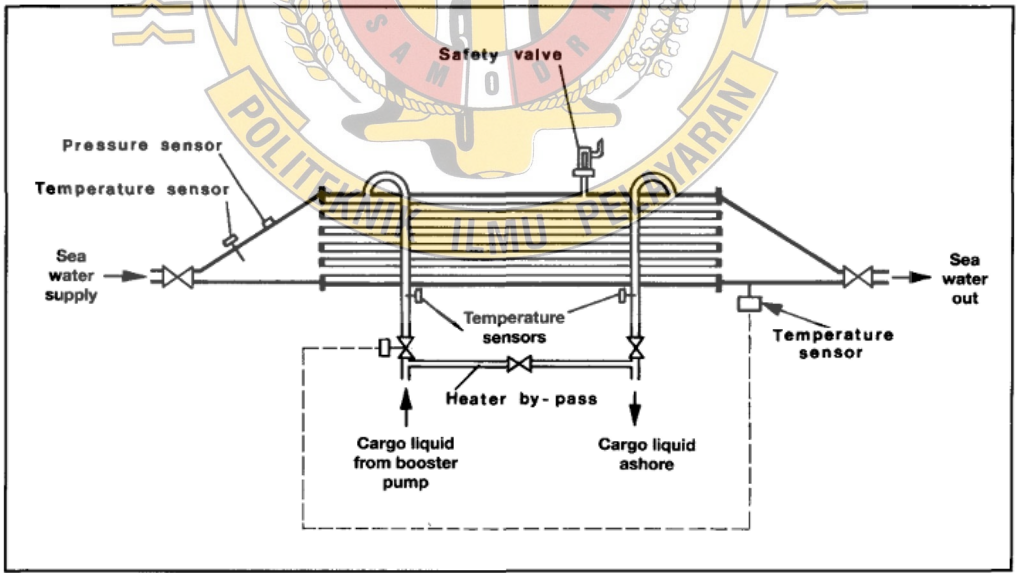
Gambar 8.3 Cargo deepwheel pump



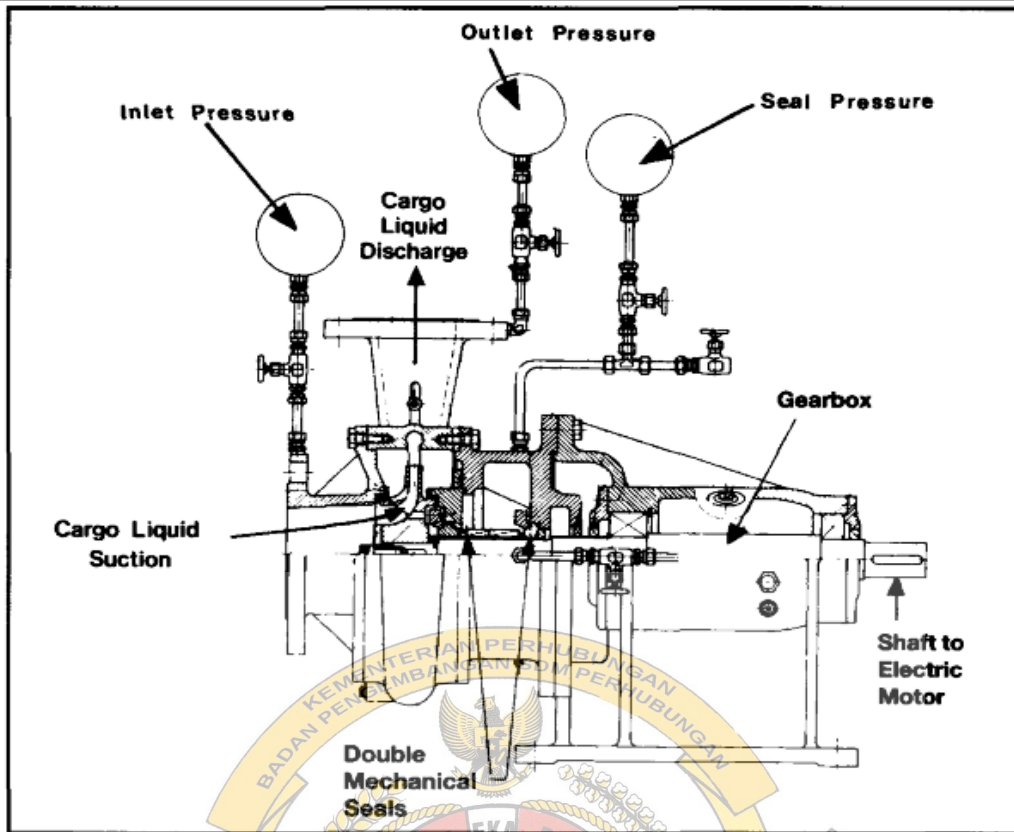
Gambar 8.4 Alur pipa dari booster pump menuju cargo heater



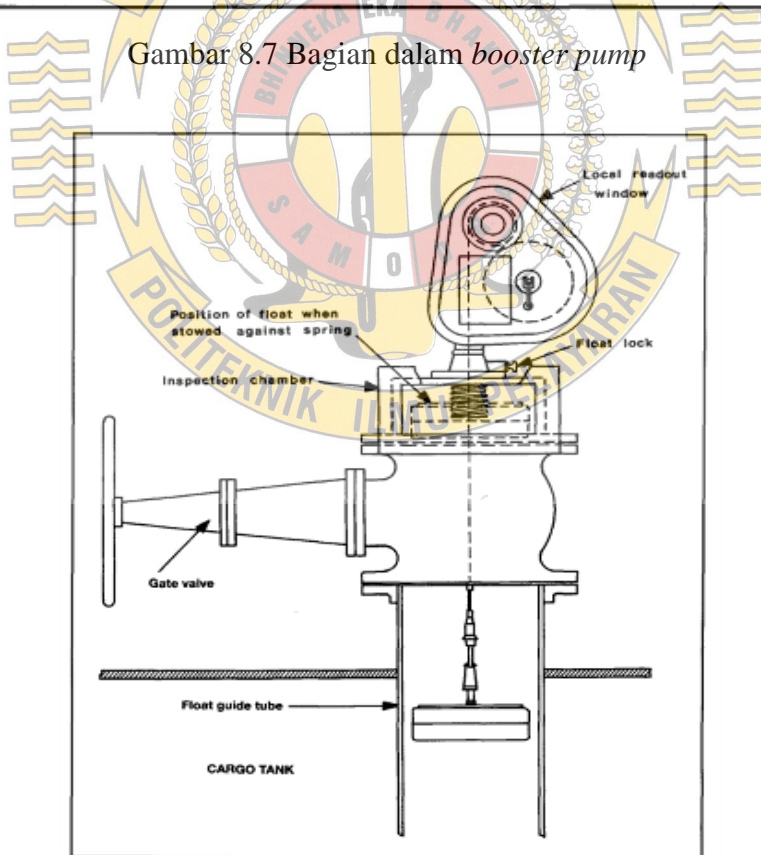
Gambar 8.5 Bagian dalam *cargo pump*



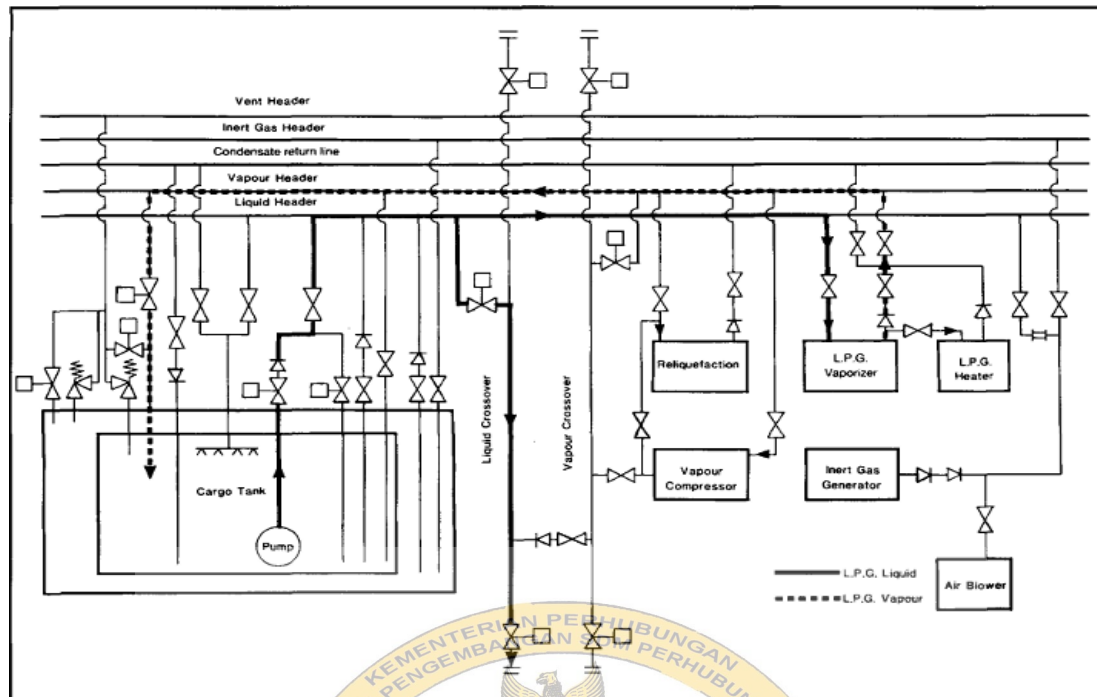
Gambar 8.6 Bagian dalam *cargo heater*



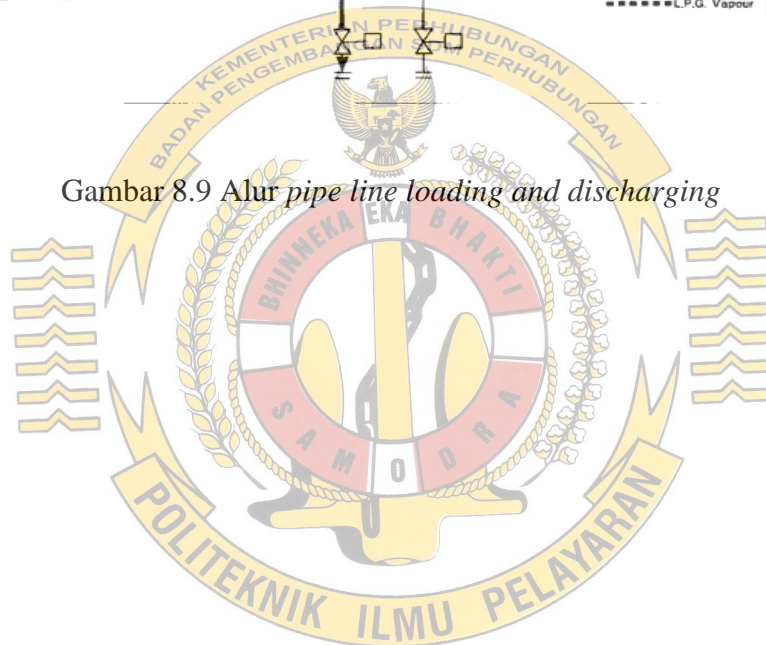
Gambar 8.7 Bagian dalam *booster pump*



Gambar 8.8 Bagian dalam *cargo pump*



Gambar 8.9 Alur pipe line loading and discharging



LAMPIRAN 9

GAMBAR RELIQUIFICATION PLANT



Gambar 9.1 Cargo compressor



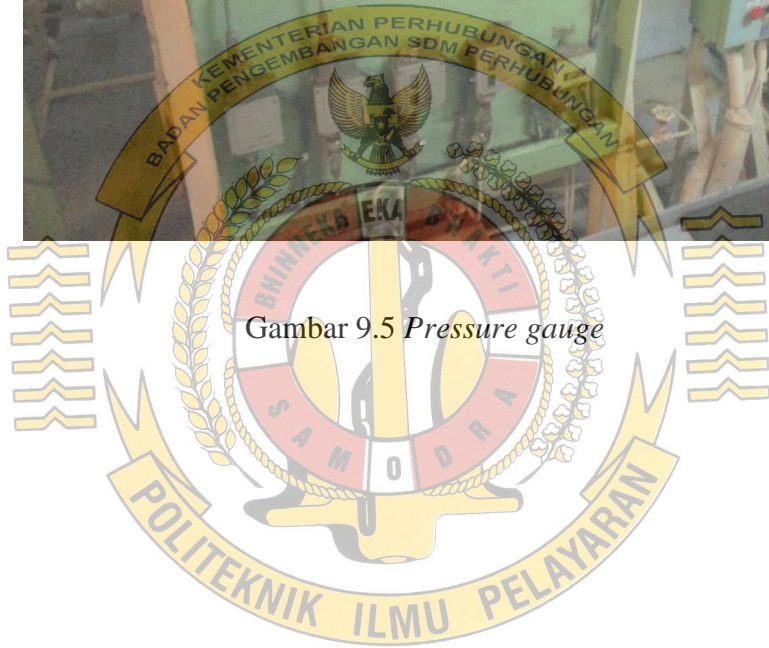
Gambar 9.2 Knock out drum



Gambar 9.3 *Expansion valve*



Gambar 9.4 *Reliquifaction room*



Gambar 9.5 Pressure gauge