

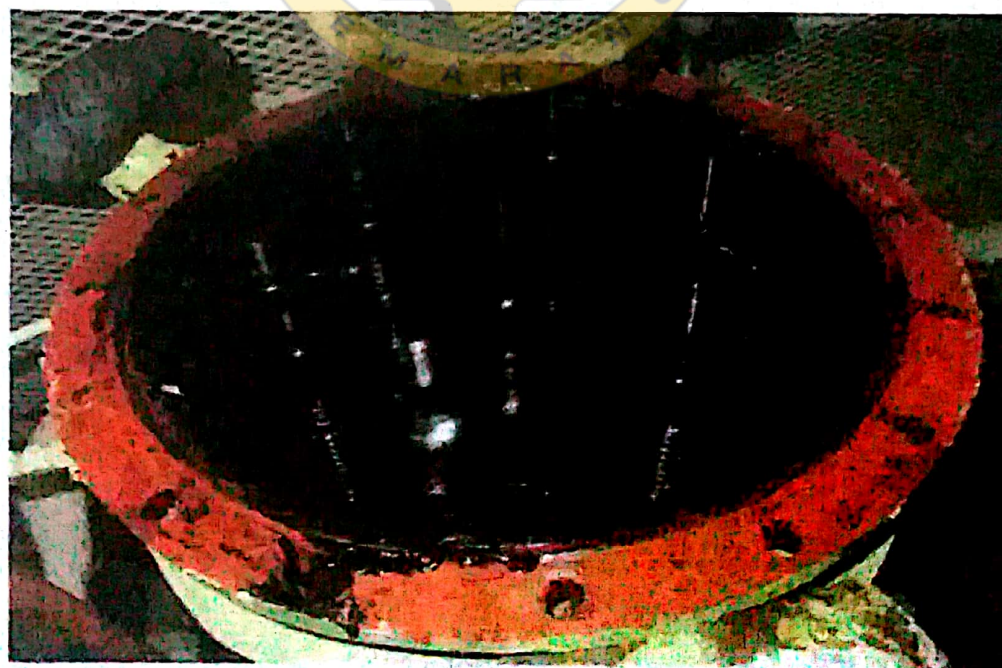
LAMPIRAN GAMBAR

Lampiran 1



Gambar: pembongkaran filter bahan bakar

Lampiran 2



Gambar: kondisi filter bahan bakar

Lampiran 3



Gambar: Filter inlet booster pump

Lampiran 4



Gambar : Filter inlet booster pump



PT. HUMPUSS
INTERMODA TRANSPORTASI Tbk

Jl. Hr. Rasuna Said Granadi Building Lt. 7 & 8 Jakarta Pusat

SHIP'S PARTICULARS

NAME OF VESSEL / CALL SIGN	: MT.ANGGRAINI EXCELLENT / PNDK
LM.O NUMBER	: 9183544
OWNER'S	: PT.ADOVELIN RAHARJA
OPERATOR'S	: PT.ADOVELIN SARANA MARITIM
PORT OF REGISTRY	: INDONESIA
GROSS TONNAGE / GRT	: 2600 TONS
NETT TONNAGE	: 1236 TONS
D.W.T	: 3500 TONS
HIGH MAXIMUM	: 29.85 METERS
L.O.A	: 90.0 METERS
MAXIMUM DRAFT	: 5.0 METERS
REGISTERED LENGTH	: 85.0 METERS
BREADTH MOULDED	: 15.0 METERS
DEPTH MOULDED	: 7.0 METERS
KIND OF VESSEL	: PRODUCT OIL TANKER.
CLASSIFICATION	: SINGLE SCREW DIESEL ENGINE DRIVEN. BV. I-3/3E. OIL TANKER ESP. DEEP SEA MACH
BUILDER'S HULL NO.	: SN - 104
NUMBER OF DECK	: ONE (1)
NUMBER OF MAST	: TWO (2)
NUMBER OF C.O.T	: TWELVE (12)
PLACE OF BUILDING	: HYUNDAI CORPORATION. ULSAN - KOREA
HORSE POWER	: 2000 BHP AT 775 RPM
ENGINE MAKER	: SSANG YONG HEAVY INDUSTRIES Co.Ltd.

PT PERTAMINA (PERSERO)
SHIPPING - MARKETING & TRADING DIRECTORATE
 SHIPPING OPERATION DIVISION HEAD OFFICE 18TH FLOOR, Jln Merdeka Timur 1A Jakarta 10110
 Phone (62-21) 3816367, 3816314, 3816333, 3816217 Fax 3455430, 3816348, 3507121
 E-mail operator@pertaminashipping.com



PERTAMINA

C R E W L I S T

Ship / Call Sign : MT-ANGGRAINI EXCELLENT / PNDK
 Nationality / Type : Indonesian Tanker Oil
 GRT/HP/IMO : 2600 T/2000 BHP/9183544
 Owners/ Agent : PT Advevelin Raharja PT. Pertamina

Arrival Date : 18 April 2017
 Last Port : Merak
 Dept Port/Time : Pontianak
 Next Port :

No	Name	Rank	Sex	Place / Date of birth	Certificate of Competency	Smn. Book	Exp. Date	Sign-On	No. PKL
1	Barbhang Hastomo	Master	M	Jepara 16-Apr-66	ANT-I 6200007374N10213	X 075761	13-Oct-17	29-Oct-16	KSOP BANTEN
2	Radin Setyo Respati	Ch Of	M	Magelang 05-Oct-72	ANT-III 6200030054M30316	E 154195	03-Mar-20	26-Nov-16	KSOP BANTEN
3	Firdaus Aj Saputro	2nd Of	M	Kendal 05-Sep-91	ANT-III 6201640495N30313	E 154183	01-Mar-20	04-Jun-16	PK-680/104V/KSOP-PTK-2018
4	Evi Meruwah	3rd Of	F	Kendal 03-August-90	ANT-III 6201294426M30316	E 154314	31-Mar-20	29-Oct-16	KSOP BANTEN
5	Suzelur Rochin	Ch Eng	M	Sokaraja 30-Jan-71	ATT-II 6200068679T20214	C 006608	02-Sep-18	15-Sep-16	PK-680/2830/KSOP-CBN-2018
6	Kusworo	1st Eng	M	Kasegeran 17-Jan-74	ATT-II 62000510103T20214	Y 048256	31-Dec-18	14-Feb-17	PK-301720/08/KSOP-CBN-2017
7	Ahmad Mahjirin	2nd Eng	M	Tegal 25-Nov-90	ATT-III 6201591420S30316	C 060447	18-Jun-19	26-Nov-16	KSOP BANTEN
8	Teoy Sunardy	3rd Eng	M	Tanjung Batu 09-Dec-91	ATT-III 6202110889T30116	B 013086	24-Jan-19	15-Sep-16	PK-680/287/IX/KSOP-PTK-2016
9	Lunadi	Master	M	Purbalingga 26-Jun-82	ATT-IV 6201109283S50216	B 013086	19-Oct-17	15-Sep-16	PK-680/285/IX/KSOP-PTK-2018
10	Hen Kurnawan	Boatman	M	Tegal 25-Nov-81	RASD 6201021403340716	X 867390	10-August-17	15-Sep-16	PK-301720/09/KSOP-CBN-2017
11	Yong Hasan Dama	A B	M	Banyumas 27-Jun-74	RASD 6200042082340716	A 040277	11-Jun-17	01-Apr-17	PK-680/126/IX/KSOP-PTK-2016
12	Agus Romadona	A B	M	Banyumas 26-August-78	RASD 6200002537340717	E 129123	23-Nov-19	05-Dec-16	PK-680/120/10/KSOP-CBN-2017
13	Tokhat	A B	M	Panunsiapan 10-Mer-69	RASE 6200250954420116	A 002072	02-Jan-19	04-Jul-16	PK-3057354/KSOP-6TR-2016
14	Yulianto	Oiler	M	Banyumas 22-Jul-68	RASE 6200250954420116	A 002072	02-Jan-19	04-Jul-16	PK-3057354/KSOP-6TR-2016
15	Dhyo Setyo Pamungkas	Oiler	M	Banyumas 06-Jul-91	RASE 6201099049420717	Y 078360	16-Oct-18	16-Jan-17	PK-680/58/IX/KSOP-PTK-2017
16	Casito	Oiler	M	Cilecap 03-Jul-81	ATT-V 6200270275T50214	A 009854	17-Jan-19	24-Sep-16	KSOP BANTEN
17	Hanzah Melala	Cook	M	Bembung 01-Mer-72	RASD 62000423872340717	A 010139	27-Feb-19	26-Nov-16	KSOP BANTEN
18	Ibnu Ari Widowo	Wiper	M	Brebes 29-August-94	RER 6202099672350715	B 051752	01-Apr-18	01-Mar-17	PK-301720/7/KSOP-CBN-2017
19	Wardana	D/Cadet	M	Demak 29-Mer-93	BST 6211566749010316	E 057171	23-Mar-19	19-August-16	KSOP BANTEN
20	Nur Indiyah Prasetyana	D/Cadet	F	Demak 05-Nov-95	BST 6211566777010316	E 057153	21-Mar-19	30-Jul-16	PK-30543/III/KSOP-8TR-2016
21	Radia Nuqi Nugrahady	E/Cadet	M	Bogor 21-Nov-96	BST 6211567597010316	E 057422	05-Apr-19	30-Jul-16	PK-30543/III/KSOP-8TR-2016
22	Sutedjan	E/Cadet	M	Cilecap 04-Jul-96	BST 6211567613010316	E 057215	28-Mar-19	26-Nov-16	KSOP BANTEN

Total Crew : 22 person (including Master)

PT Pertamina

Head Of Marine Pontianak

Mengetahui,
 KASI KESELAMATAN BERLAYAR
 PENJAGAAN DAM PATROLI

Pontianak, 18 April 2017
 Acknowledge By

Capt Bambang Hastomo
 Master



ASMI Ships Management

Linggayati Building 1st Floor - 101
Jl. Raya Puri II No. 7 Jakarta Timur
Jakarta 15260
Phone -62 21 47861749, 47865627, 47866530, 47861080
HP -62 811836963
Fax +62 47863460
Email tekhnik@asmindoonesia.com
asfavalita@asmindoonesia.com
asfavalita.shipsmanagement@gmail.com

ME & AE RUNNING HOURS REPORT (MONTHLY)

To : TEKHNIK DEPARTMENT

NAME OF VESSEL : MT. ANGGRAINI EXCELLENT	DATE : 31 JANUARI 2017
	PORT : TG.UBAN

ME R/H per MONTH : 312.5

CYLINDER No.	1	2	3	4	5	6
PISTON	7130	7130	7130	7130	7130	7130
CYLINDER LINER	16899.7	7054.9	16899.7	16899.7	7054.9	16899.7
TURBO CHARGE SINCE LAST O/H	RENEWED , Pulau Sambu, 15 Juni 2012					
	11780					
ME TOTAL R/H Since Last Docking	7130					

AE R/H per MONTH AE 1 : 467 AE 2 : 112.5 AE 3 : 313


AUX. ENG. NO.	1	2	3
TOP O/H RUNNING HRS.	7691	14466.4	13614.9
T/C RUNNING HRS.	7691	24654.7	19491.2
CON. ROD BOLT RUNNING HRS.	7691	14466.4	13614,9
AE TOTAL R/H Since Last Docking	7691	14466.4	13614.9



HERY PRAMONO
CHIEF ENGINEER

Capt. ROEDY POERMONO.F
MASTER

PT. ADOVELIN RAHARJA
LAPORAN KINERJA MESIN INDUK

NAMA KAPAL MT Anggraini Excellent		Dari Tg.Uban		Menuju Pontianak							
Tanggal 02 Februari 2016		Voyage		In Laden							
Engine Type SSANGYONG MAN-B&W 6L28/32A				Output 2000 HP/KW							
Suhu Kamar Mesin 42 °C		Suhu Air Laut 31 °C		Wind force / Direction:							
Sarat Haluan m		Sarat Buritan m		Cuaca							
Kecepatan Kapal 10		Knots									
Slip		%									
MESIN UTAMA			TURBOCHARGER								
RPM Mesin	6279	RPM	RPM Turbin	20000	RPM						
Total Jam Kerja	7133	Hours	Blower Filter Pressure		MMWC						
TEKANAN			Air Cooler Back Pressure		MMWC						
F O After Filter	2.7	Bar	Scavenge Air Press	0.9	Bar						
Piston Cooling	3.8	Bar	Exh. Gas Press After T/C		MMWC						
Bearing L.O	3.8	Bar	TEMPERATURE								
Beban Mesin	85	%	Scav Air Cooler inlet		°C						
Jacket Water Cooling	4.0	Bar	Scav Air Cooler Outlet		°C						
Sea Water Cooling	1.5	Bar	Exh. Gas Turbine Inlet		°C						
FUEL OIL	2.6		Exh. Gas Turbine Outlet		°C						
F O Engine inlet temp.		°C	Suhu Ruang Mesin	40	°C						
			F O. Specific Gravity	0.815							
			F.O. Viscosity at 50 °C		CST						
Nomor Silinder		1	2	3	4	5	6	7	8	9	rata-rata
Tekanan Max. Silinder	Bar	85	80	82	80	90	84				
Tekanan Kompresi Silinder	Bar	61	60	60	60	62	61				
Indek Pompa Bahan Bakar		25	30	29	32	30	30				
Suhu Gas buang	°C	280	290	290	280	290	290				
Suhu Jacket F W Out	°C	84	84	84	84	84	84				
Piston Cooling out	°C										
Konsumsi Minyak Bakar (FO)	Grade:MDO					4.510				MT/ hari	
Konsumsi Pelumas (LO System)	Grade: SAE 40					40				LITER / hari	
Konsumsi Pelumas (LO Cylinder)	Grade:									LITER / hari	
NOTE											
Pemeriksa				Diperiksa				Mengetahui			
Masinis I KUSWORD				KKM HERY PRAMONO				 Nakhoda ROEDY P F			

MT. Angraini Excellent

SAFETY DEVICES AND ALARMS SET POINT RECORDS

No	Safety and Alarm Devices Description	TRIP / ALARM	POS	SET POINT	RESULT	Planning Date	Actual Date
1	MAIN DIESEL ENGINE						
1	Manual	TRIP	CR	MANUAL	OK	PMS DES 2011	10/01/2012
2	Low Press of Main Bearing Lub Oil Inlet	TRIP	CR	1.4 kg/cm ²	1.9	PMS DES 2011	10/01/2012
3	Low Press of Jacket Cool Fresh Water Inlet	TRIP	CR	0.1 kg/cm ²	0.4	PMS DES 2011	10/01/2012
4	Low Press of Exh. Gas Valve Spring Air Inlet	TRIP	CR	NA kg/cm ²	NA		
5	Overspeed	TRIP	CR	kg/cm ²		PMS DES 2011	10/01/2012
6	Safety Control Air	LOW PRESS ALARM	CR	4 kg/cm ²	0	PMS DES 2011	10/01/2012
7	Control Air (Air Source Unit)	LOW PRESS ALARM	CR	20 kg/cm ²	20	PMS DES 2011	10/01/2012
8	Lub. Oil Filter Differential	HIGH PRESS ALARM	CR	0.8 kg/cm ²	0.8	PMS DES 2011	10/01/2012
9	Lub. Oil Inlet	LOW PRESS ALARM	CR	2.0 kg/cm ²	2.6	PMS DES 2011	10/01/2012
10	Jacket Cool Fresh Water Inlet	LOW PRESS ALARM	CR	0.5 kg/cm ²	0.5	PMS DES 2011	10/01/2012
11	Exh. Valve Spring Air Inlet	LOW PRESS ALARM	CR	NA kg/cm ²	NA		
12	M/E Lub Oil Inlet	LOW PRESS ALARM	CR	NA kg/cm ²	NA		
13	Cool Sea Water Inlet	LOW PRESS ALARM	CR	NA kg/cm ²	NA		
14	M/E Fuel Oil Inlet	LOW PRESS ALARM	CR	NA kg/cm ²	NA		
15	M/E Fuel Oil Strainer Differential	HIGH PRESS ALARM	CR	NA kg/cm ²	NA		
16	Exh. Gas Valve Actuator Oil Inlet	LOW PRESS ALARM	CR	NA kg/cm ²	NA		
17	M/E Lub Oil Strainer Differential Press	HIGH PRESS ALARM	CR	2.5 kg/cm ²	2.2	PMS DES 2011	10/01/2012
18	L/C Lub Oil Sump	HIGH TEMP ALARM	CR	0	NA		
19	Thrust Pad Forward	HIGH TEMP ALARM	CR	0	NA		
20	M/E Lub Oil Inlet	HIGH TEMP ALARM	CR	65°	66	PMS DES 2011	10/01/2012
21	Jacket Cool Fresh Water Each Outlet	HIGH TEMP ALARM	CR	92°	90	PMS DES 2011	10/01/2012
22	Piston Cool Lub Oil Each Outlet	HIGH TEMP ALARM	CR	0	NA		
23	Exh. Gas Each Cylinder Outlet	HIGH TEMP ALARM	CR	0	NA		
24	Exh. Gas T/C Inlet	HIGH TEMP ALARM	CR	0	NA		
25	Exh. Gas each cylinder Outlet Excess Deviation	HIGH TEMP ALARM	CR	0	NA		
26	Scavenging Air Chamber	HIGH TEMP ALARM	CR	0	NA		
27	Cylinder Oil Non-Flow	ALARM	CR	NON-FLOW	NA		
28	Stop of Cylinder Oil Supply	ALARM	CR	STOP	NA		
29	Crank Case Oil Mist	HIGH ALARM	CR	15 (POS)	NA		
30	M/E Remote Control Power Source Failure (AC & I)	ALARM	CR	FAIL	OK	PMS DES 2011	10/01/2012
31	Fuel Oil Leakage	ALARM	CR	LEAK	OK	PMS DES 2011	10/01/2012
32	Telegraph Source Failure	ALARM	CR	FAIL	OK	PMS DES 2011	10/01/2012
33	Passive Failure	ALARM	CR	FAIL	NA		
34	Aux Blower Abnormal Stopping	ALARM	CR	STOP	NA		
35	Fuel Oil Viscosity	HIGHFLOW ALARM	CR	RW me	NA		
36	Viscator Abnormal	ALARM	CR		NA		

Note: be on board, please write NA (Not Applicable)

Cc: Fleet Department

II	MAIN DIESEL GENERATOR ENGINE						
1	Lub Oil Low Press.	TRIP	ES & CR	Kg/cm ²	3.0	PMS DES 2011	10/01/2012

MT. Anggraini Excellent

SAFETY DEVICES AND ALARMS SET POINT RECORDS

No	Safety and Alarm Devices Description	TRIP / ALARM	POS	SET POINT	RESULT	Planning Date	Actual Date
2	Overspeed	TRIP	E/S & CR		7.20	PMS DES 2011	10/01/2012
3	Cool Water Outlet High Temp	TRIP	R/S & CR	° C	93	PMS DES 2011	10/01/2012
4	Lub Oil Inlet	LOW PRESS ALARM	CR	Kg/Cm ²	3.4	PMS DES 2011	10/01/2012
5	Cool Fresh Water Inlet	LOW PRESS ALARM	CR	Kg/Cm ²	1.2	PMS DES 2011	10/01/2012
6	Priming Lub Oil Inlet	ALARM	E/S	Kg/Cm ²	0.8	PMS DES 2011	10/01/2012
7	Lub Oil Inlet	HIGH TEMP ALARM	CR	° C	80 C	PMS DES 2011	10/01/2012
8	Cool Fresh Water Outlet	HIGH TEMP ALARM	CR	° C	90 C	PMS DES 2011	10/01/2012
9	Exh. Gas Manifold (T/C Inlet)	HIGH TEMP ALARM	CR	° C			
10	Lub. Oil Sump Tank Level	LOW LEVEL ALARM	CR	LOW			
11	Fuel Oil Leakage From High Press Pipe	ALARM	CR	HIGH	OK	PMS DES 2011	10/01/2012
12	Start Failure	ALARM	CR (MSB)	FAIL	OK	PMS DES 2011	10/01/2012

III	EMERGENCY GENERATOR						
1	Lub Oil Low Press	TRIP	E/S	Kg/Cm ²			
2	Over Speed	TRIP	E/S	RPM			
3	Cyl. Head High Temp	TRIP	E/S	° C			
4	Starting Air Low Press	TRIP	E/S	Kg/Cm ²			
5	Start Failure	ALARM	E/S, CR	FAIL			

IV	AUX. BOILER						
1	Manual	TRIP	CR	MANUAL			
2	Start-Position Abnormal	TRIP	MS	ABNORMAL			
3	Flame Failure	TRIP	MS	FLAME FAIL			
4	Drum Water Level Too Low	TRIP	MS	NOR mm			
5	Air Pressure Low	TRIP	MS				
6	Fire Abnormal	TRIP	MS	ABNORMAL			
7	Control Effect Power Fall	TRIP	MS	FAIL			
8	Burner Motor Stop	TRIP	MS	STOP			
9	Fuel Oil Temp. Too Low	TRIP	MS	° C			
10	Feed Water Low Pressure	LOW PRESS ALARM	CR	Kg/Cm ²			
11	Fuel Oil Pressure Low	LOW PRESS ALARM	CR	Kg/Cm ²			
12	Drum Water Level	HIGH/LOW ALARM	CR	NOR			
13	Smoke Density	HIGH ALARM	CR	POINT			

V	MAIN AIR COMPRESSOR						
1	Lub Oil Pressure	TRIP	CR	Kg/Cm ²			
2	Exhaust Air High Temp	TRIP	CR	° C			

Note: If on board, please write NA (Not Applicable)

Cc. Fleet Department

VI	CARGO OIL PUMP TURBINE						
1	Manual	TRIP	MS, CR, DOC	STOP	NA		
2	Lub. Oil Low Press	TRIP	MS, CR, DOC	Kg/Cm ²	NA		

MT. Anggraini Excellent

SAFETY DEVICES AND ALARMS SET POINT RECORDS

No.	Safety and Alarm Devices Description	TRIP / ALARM	POS	SET POINT	RESULT	Planning Date	Actual Date
3	Turbine High Back Press	TRIP	MS, CR, CCR	Kg/Cm ²	NA		
4	Over Speed (Electric)	TRIP	MS, CR, CCR	RPM	NA		
5	Over Speed (Mechanical)	TRIP	MS, CR, CCR	RPM	NA		
6	Low Inert Gas Press	TRIP	MS, CR, CCR	mm Hg	NA		
7	Pump Casing High Temp.	TRIP	MS, CR, CCR	°C	NA		
8	Pump Disch. Press	TRIP	MS, CR, CCR	Kg/Ce ¹	NA		
9	Pump Bearing Over Heat	TRIP	MS, CR, CCR	°C	NA		
10	Pump Room Staf. Box Over Heat	TRIP	MS, CR, CCR	°C	NA		
11	Low Lub Oil Press	ALARM	MS	Kg/Cm ²	NA		
12	Pump Casing High Temp.	ALARM	MS, CCR	°C			
13	Pump Bearing High Temp.	ALARM	MS, CCR	°C (GGUP)	NA		
14	Pump Bearing High Temp	ALARM	MS, CCR	°C (SENI)	NA		
15	Pump Room Staf. Box High Temp	ALARM	MS	°C			
VII DIESEL OIL PURIFIER							
1	Emergency Stop	TRIP	MS	EMERG. STOP	OK	PMS DES 2012	02/01/2012
2	Oil Leakage	ALARM	MS & CR	OIL LEAK	NC		
3	No. Shut Of Bowl	ALARM	MS & CR	No. Shut Of Bowl	NC		
VIII LUB. OIL PURIFIER							
1	Emergency Stop	TRIP	MS	EMERG. STOP	OK	PMS DES 2012	02/01/2012
2	Oil Leakage	ALARM	MS & CR	OIL LEAK	OK	PMS DES 2012	02/01/2012
3	No. Shut Of Bowl	ALARM	MS & CR	No. Shut Of Bowl	OK	PMS DES 2012	02/01/2012
IX FUEL OIL PURIFIER							
1	Emergency Stop	TRIP	MS	EMERG. STOP	NA		
2	Oil Leakage	ALARM	MS & CR	OIL LEAK	NA		
3	No. Shut Of Bowl	ALARM	MS & CR	No. Shut Of Bowl	NA		
X INCINERATOR							
1	Flame Failure	TRIP	MS	FLAME FAILURE			
2	High Exh. Gas Temp	TRIP	MS & CR	450°C	438	PMS DES 2012	02/01/2012
3	Low Atmizing Air-Press	TRIP	MS & CR	Kg/Cm ²	2.8	PMS DES 2012	02/01/2012
4	Low Waste Oil Level	TRIP	MS & CR	mm From tank bottom			
5	F.D. Fan Trip & Waste Oil Pump Trip	TRIP	MS & CR	TRIP	OK	PMS DES 2012	02/01/2012
6	Electric Source Failure	TRIP	MS & CR	FAILURE	OK	PMS DES 2012	02/01/2012
7	High Waste Oil Level	ALARM	MS & CR	1000 mm From tank Top	1100	PMS DES 2012	02/01/2012
8	Low Waste Oil Level	ALARM	MS & CR	1000 mm	12	PMS DES 2012	02/01/2012
9	High Waste Oil Temperatur	ALARM	MS & CR	85°	83	PMS DES 2012	02/01/2012

Note: If on board please write NA (Not Applicable)

Cc. Fleet Department

XI SEWAGE TREATMENT UNIT							
1	Disc. Pump Auto Start	AUTO START	MS	H LEVEL	OK	PMS DES 2012	03/01/2012
2	Disc. Pump Auto Stop	AUTO STOP	MS	H LEVEL	OK	PMS DES 2012	03/01/2012
3	Stabilizing Tank Level	ALARM	MS & CR	H LEVEL	OK	PMS DES 2012	03/01/2012

MT. Anggraini Excellent

SAFETY DEVICES AND ALARMS SET POINT RECORDS

No	Safety and Alarm Devices Description	TRIP / ALARM	POS	SET POINT	RESULT	Planning Date	Actual Date
11	Purifier Operating Water Tank	LOW LEVEL ALARM	C/R	mm			
12	Forward Stern Tube Seal Lub. Oil Tank	LOW LEVEL ALARM	C/R	mm			
13	MA L.O Buffer Column	LOW LEVEL ALARM	C/R	LOW			
14	F.O Vent Unit Leak	LOW LEVEL ALARM	C/R	LOW			
15	Cool Fresh Water Tank Expansion Tank	LOW LEVEL ALARM	C/R	LEAK			
16	Cascade Tank	LOW LEVEL ALARM	C/R	MM			
17	L.O Sludge Tank	HIGH/LOW LEVEL ALARM	C/R	mm			
18	Bilge Tank	HIGH LEVEL ALARM	C/R	mm			
		HIGH LEVEL ALARM	C/R	mm			
19	Separated Bilge Oil Tank	HIGH LEVEL ALARM	C/R	From tank Top			
		HIGH LEVEL ALARM	C/R	mm			
20	L/R Forward Starboard & Port Side Bilge Well	HIGH LEVEL ALARM	C/R	From tank Top			
		HIGH LEVEL ALARM	C/R	mm			
21	L/R All Bilge Well	HIGH LEVEL ALARM	C/R	From tank Top			
		HIGH LEVEL ALARM	C/R	mm			
22	Aux. Condenser Hot Well Level	HIGH LEVEL ALARM	C/R	From tank Top			
		HIGH LEVEL ALARM	C/R	mm			
XVI	MISCELLANEOUS			From tank Bottom			
1	Dist. Water Pump Disch. Line Salinity						
2	Aux. Condenser Outlet Salinity	HIGH ALARM	C/R	PPM			
3	Aim. Cond. Condensate Water Line Salinity	HIGH ALARM	C/R	PPM			
4	Aux. Air Ejector Drain Outlet Salinity	HIGH ALARM	C/R	PPM			
5	Tank Cleaning Heater Drain Outlet Salinity	HIGH ALARM	C/R	PPM			
6	Steering Gear Over Load	HIGH ALARM	C/R	PPM			
7	Steering Gear Phase Failure	ALARM	C/R	OVER LOAD			
8	Steering Gear Power Failure	ALARM	C/R	FAIL			
9	Steering Gear Hyd. Oil Tank Level	LOW LEVEL ALARM	C/R	FAIL			
		LOW LEVEL ALARM	C/R	mm			
10	Sterilizer Over Load	ALARM	M/S, C/R	Meter Over Load			
				From Tank Top			

Cc. Fleet Department



Number of INSA No. 1311/INSA/V/2004

Jl. Bz. Mardiana No. 10, Palembang 30116 Telp: (0211) 712883 Hk Fax: (0211) 71 8757 E-mail: info@adovelinraharja.com

PERUSAHAAN PELAYARAN
PT. ADOVELIN RAHARJA



Critical & Emergency Equipment

VESSEL MT. ANGRAINI EXCELLENT

YEAR : 2017

DATE: APRIL

No	NAME OF EQUIPMENT	Period	Month												RESULT	REMARK		
			JAN	FEB	MAR	APR	MEI	JUN	JUL	AGT	SEP	OKT	NOV	DES				
1	Emergency Compressor	2W	10/24	7/21	17/24	9/20												GOOD
2	Emergency Fire Pump & It's priming (Vacuum Pump)	2W	10/24	7/21	17/24	9/20												GOOD
3	Emergency Shut Off / Quick Closing V/V for Oil Tank	2W	10/24	7/21	17/24	9/20												GOOD
4	Scumming Pipe Self Closing Cocks & Cops	1W	10	07	17	9												GOOD
5	Emergency Stop for Vent Fans & Fire Dampers	2M	10	07	17													GOOD
6	Emergency Batteries	1M	10	07	17	9												GOOD
7	Fire Detecting System (K/CL/MTH-20)	2M	10	07	17													GOOD
8	CO2 Release Alarms	3M	10	07	17													GOOD
9	Oil/Water Separator, 15 ppm Alarm (Calib-rite)	2M	10	07	17													GOOD
10	E/R Emergency Bilge Suction V/V Slight Open	2M	10	07	17													GOOD
11	High Level E/R Bilge Well Alarm	2M	10	07	17													GOOD
12	Emergency Test for M/E starting	1W	10	07	17	9												GOOD
13	Boat Fireme	1W	10	07	17	9												GOOD
14	Emergency Lighting	2M	10	07	17													GOOD
15	Inchirator	1M	10	07	17	9												GOOD
16	Sewage Treatment System	3M				9												GOOD
17	Self Closing of Fire doors E/R & Staircase	1M	10	07	17	9												GOOD
18	Cover of Air System	1M	10	07	17	9												GOOD
19	Emergency Stop of Accommodation Fan Unit & Dampier	1M	10	07	17	9												GOOD
20	Door Lock & Lighting, Safety Sign of	2W	10/24	7/21	17/24	9/20												GOOD

Emergency Exit Trains											
21	Emergency Steering Drill Test	2-3M		07						GOOD	
22	Alarm Device of Steering Gear Unit	3M							9	GOOD	
23	Cargo Pump Room Bilge Alarm	2M		07					9	GOOD	
24	High Level Alarm of Cargo Tanks	2M									
	No. 1P		10			20				GOOD	
	No. 15		10			20				GOOD	
	No. 2P		10			20				GOOD	
	No. 25		10			20				GOOD	
	No. 3P		10			20				GOOD	
	No. 35		10			20				GOOD	
	No. 4P		10			20				GOOD	
	No. 45		10			20				GOOD	
	No. 5P		10			20				GOOD	
	No. 55		10			20				GOOD	
	Stop (P)		10			20				GOOD	
	Stop (S)		10			20				GOOD	
25	High Level Alarm of Bunker Tanks	2M									
	No. Service Tk M/E		10			20				GOOD	
	No. Setting Tk M/E		10			20				GOOD	
	No. Service Tk A/E		10			20				GOOD	
26	Emergency Stop for Cargo Oil Pumps	3M								GOOD	
27	CABA (Compressed Air Breathing Apparatus)	3M								GOOD	
28	Fuel & General Alarm (SOLAS '92, Reg. 50)	3M								GOOD	
29	Change Over to Standard Compass Mode	3M								GOOD	
30	Calibrate & Test Gas Measuring Equipment	3M								GOOD	
31	Life boats water sounding	2-3M		10						GOOD	
32	Oil Discharge monitoring - calibrate PPM	1M		10		07		10		9	GOOD

* M = Month W = Week NA = If Not Applicable

HERY PRAMONO
CHIEF ENGINEER

Capt. AHMAD NUR U
CAPTAIN