

LAMPIRAN 5

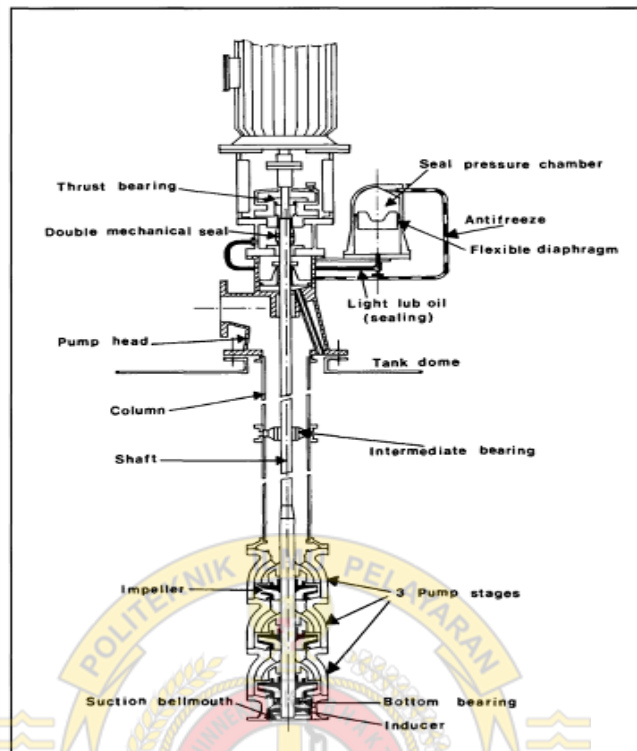
GAMBAR PERALATAN BONGKAR



Gambar 5.2 Pemasangan *Manifold Filter Kapal Gas Arar*



Gambar 5.3 *Cargo pump Kapal Gas Arar*



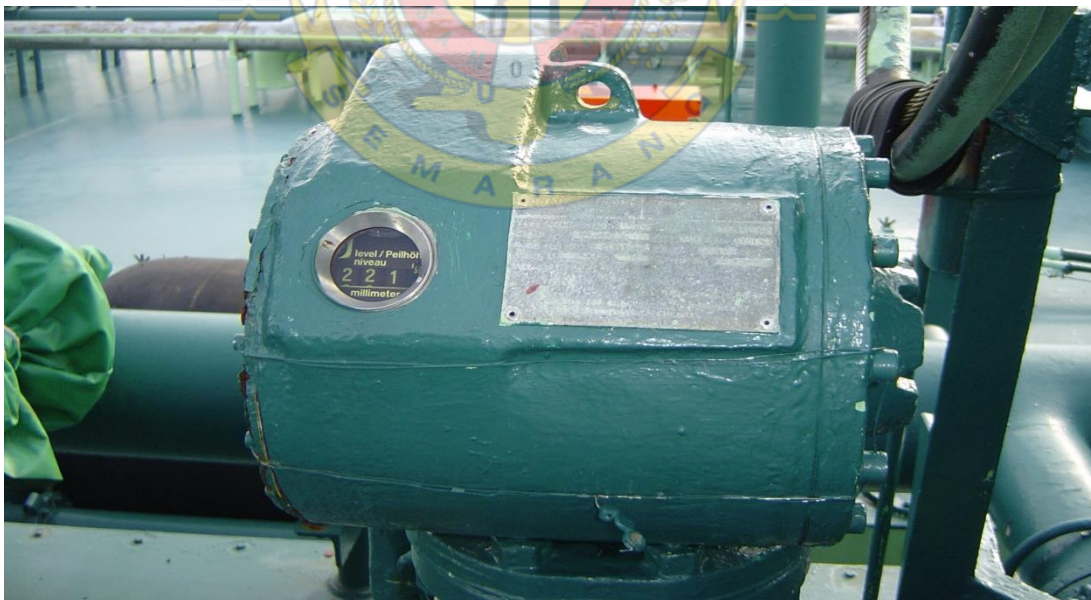
Gambar 5.4 Bagian Dalam *Deepwell pump*



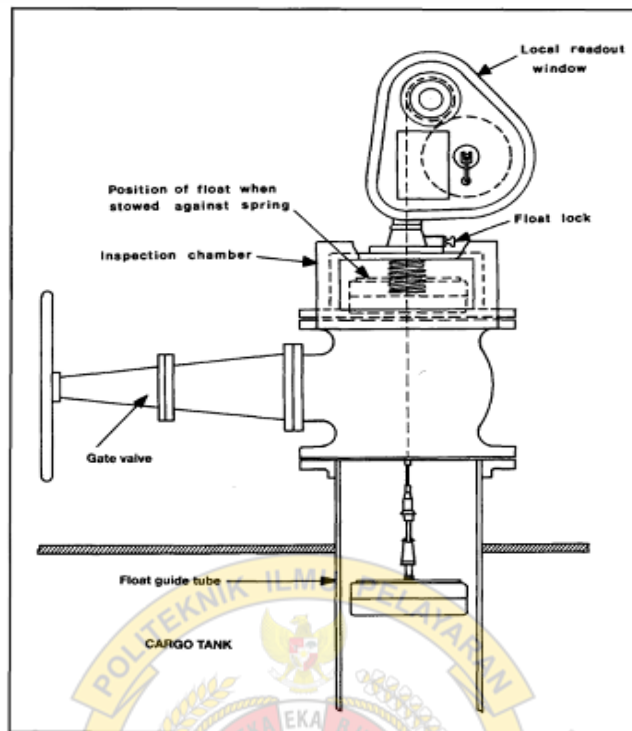
Gambar 5.5 Indikator *Hidraulic Discharge Cargo* Kapal Gas Arar



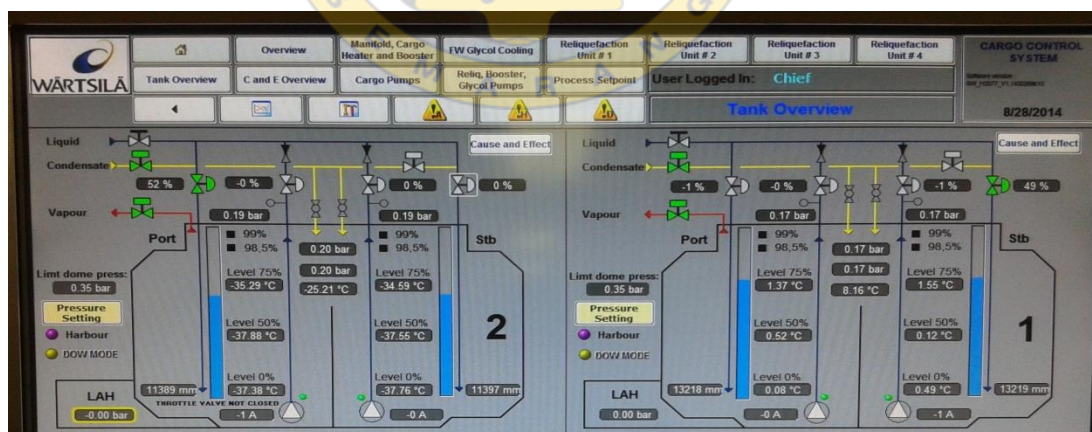
Gambar 5.6 Reducer Kapal Gas Arar



Gambar 5.7 Level Gauge Kapal Gas Arar



Gambar 5.8 Bagian Dalam Level Gauge



Gambar 5.9 Cargo Control Monitor Kapal Gas Arar



Gambar 5.10 *Ballast Control Monitor* Kapal Gas Arar

